

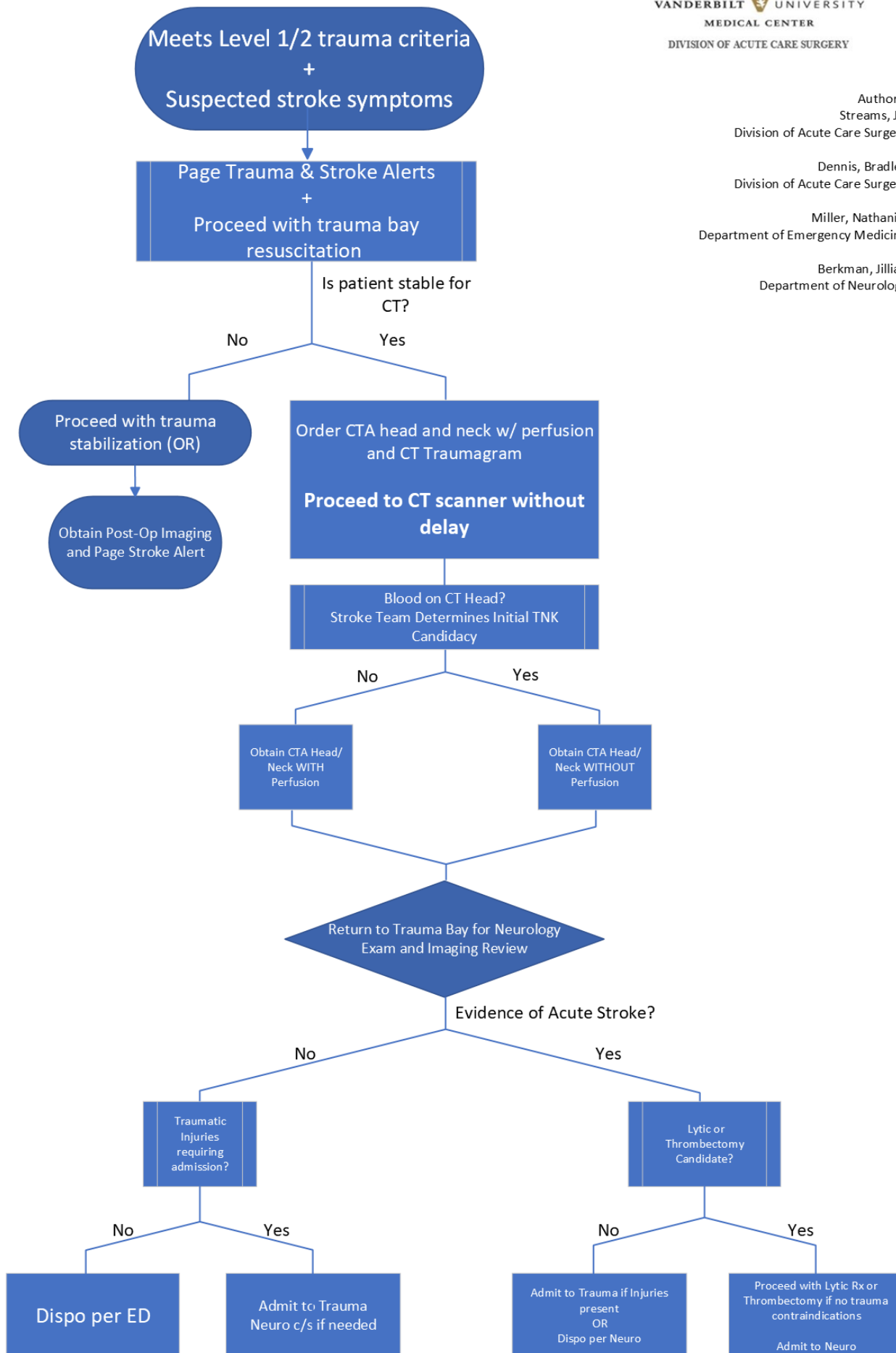
Stroke Trauma Practice Management Guideline

Authors:
Streams, Jill
Division of Acute Care Surgery

Dennis, Bradley
Division of Acute Care Surgery

Miller, Nathaniel
Department of Emergency Medicine

Berkman, Jillian
Department of Neurology



Dates of Revision:

1/9/2026, 1/24/2024, 1/2/2022

References:

Lee JS, Finch H, Higa K, Khan AD, Millar J, O'Neil J, MacIndoe C, Brockman V, Stringer D, Schroepel TJ. STRAUMA: A Novel Alert System for a Combined Stroke and Trauma. Am Surg. 2023 Nov;89(11):4388-4394. doi: 10.1177/00031348221111510. Epub 2022 Jun 30. PMID: 35773229.

Lateef F, Lim F, Kent LY, Genevieve MNY, Sulaiman MRB, Galwankar S, Goncalves RV, Glaze D, Lai M. STRAUMA Code: The Systematic Approach to Simultaneous Stroke and Trauma Assessment - Strengthening the "Stroke-Trauma" Chain of Survival. J Emerg Trauma Shock. 2025 Apr-Jun;18(2):56-61. doi: 10.4103/jets.jets_92_24. Epub 2025 Apr 22. PMID: 40666396; PMCID: PMC12258529.