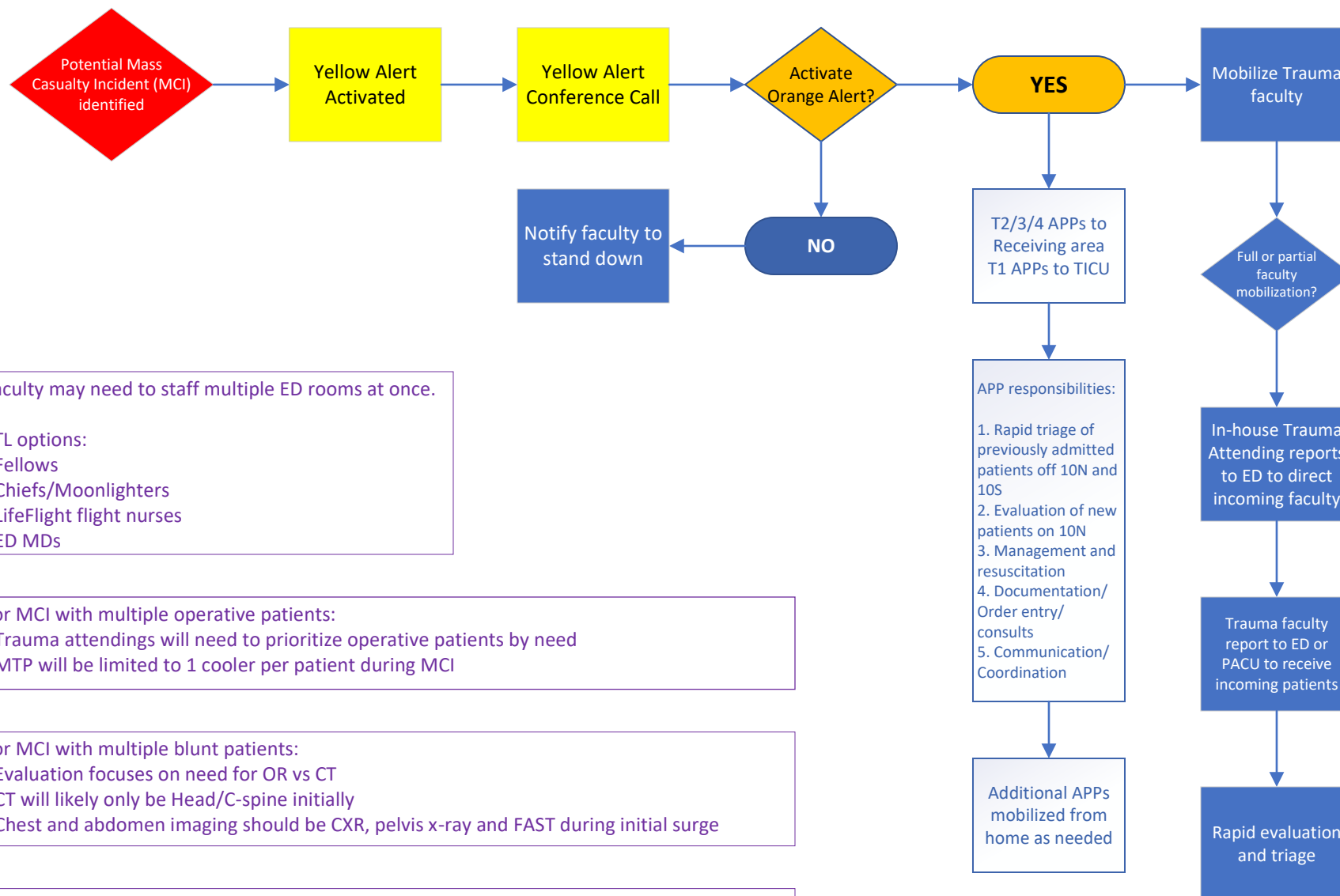


Vanderbilt Division of Trauma Mass Casualty Plan



Faculty may need to staff multiple ED rooms at once.

TTL options:

- Fellows
- Chiefs/Moonlighters
- LifeFlight flight nurses
- ED MDs

For MCI with multiple operative patients:

- Trauma attendings will need to prioritize operative patients by need
- MTP will be limited to 1 cooler per patient during MCI

For MCI with multiple blunt patients:

- Evaluation focuses on need for OR vs CT
- CT will likely only be Head/C-spine initially
- Chest and abdomen imaging should be CXR, pelvis x-ray and FAST during initial surge

*MD staffing upcoming T1 shift will NOT be summoned for duty

*One MD will be stationed on 10N to manage new admissions

*Senior T2 APP will direct T2/3/4 APPs to where they are most needed

**ALL employees will need to enter via ED and MUST have ID badges to enter building