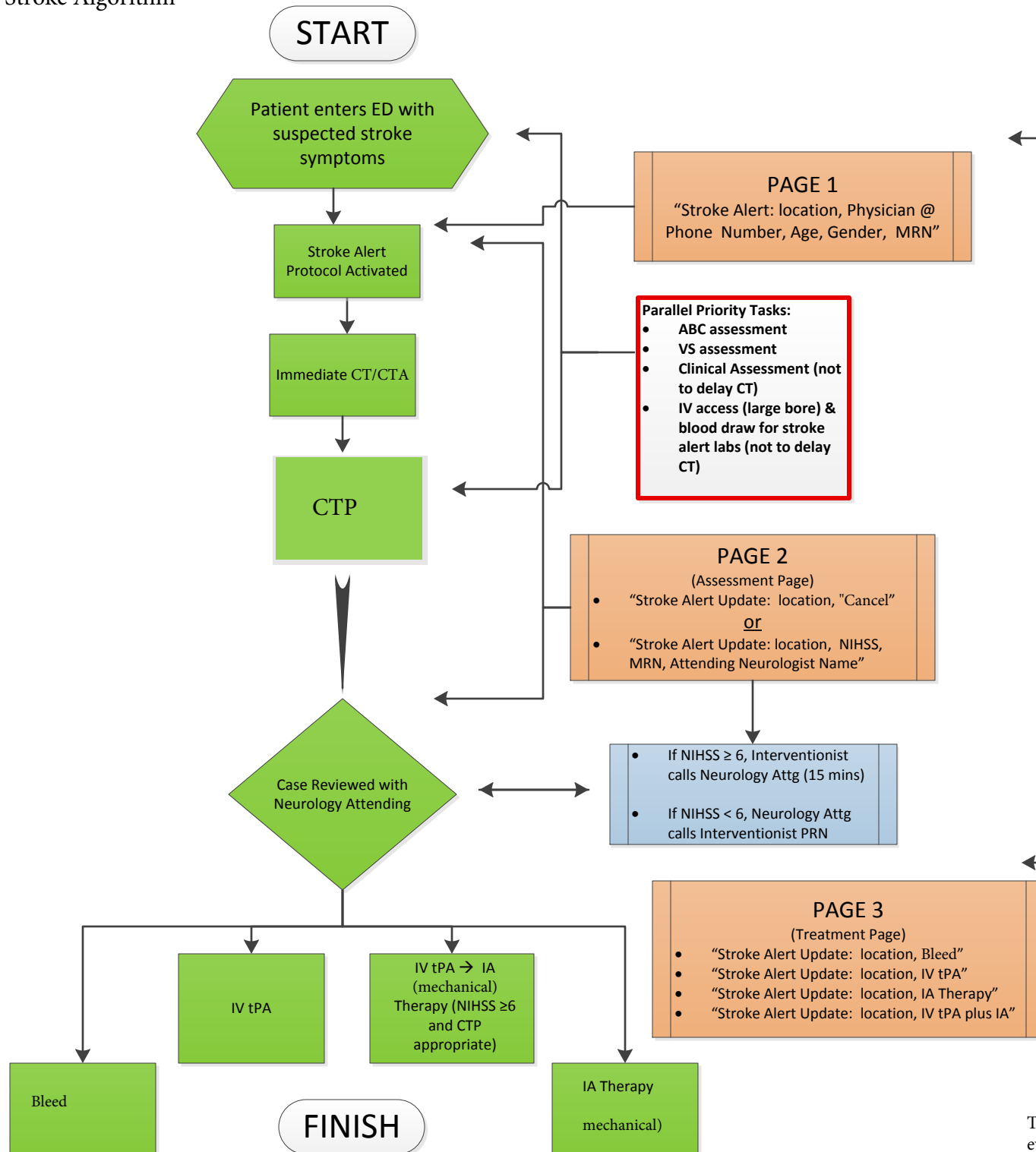


CALL: Wake up, unknown time or <8 hours

May go out to 12 hours for transfer patients

Trials out to 16 hours



Time Goals:
15 minutes to neuro at bed and Assessment Page
45 minutes to IV tPA
60 minutes to Out of ED

Neurology Sr Resident directs Stroke Alert:
1) Identify themselves to ED team and RN (establish primary RN contact): "I am the Neurology Resident directing this stroke alert"
2) Obtain NIHSS → Assessment Page
3) Discuss with Attg → Treatment Page
4) Place order for IV tPA
5) Communicate plan to ED team and RN
6) For all NICU admits, communicate plan to Neuro NP (498-5298)
7) Facilitate transfer to ICU, Floor, or IA suite as rapidly as possible
8) For each patient consider candidacy for stroke trials

ED Team:
1) Early identification of specific geographic location or working telephone number for family contact.

The algorithm remains in effect for all appropriate cases, even when 2 or more present simultaneously. This is possible due to the availability of providers and imaging equipment.