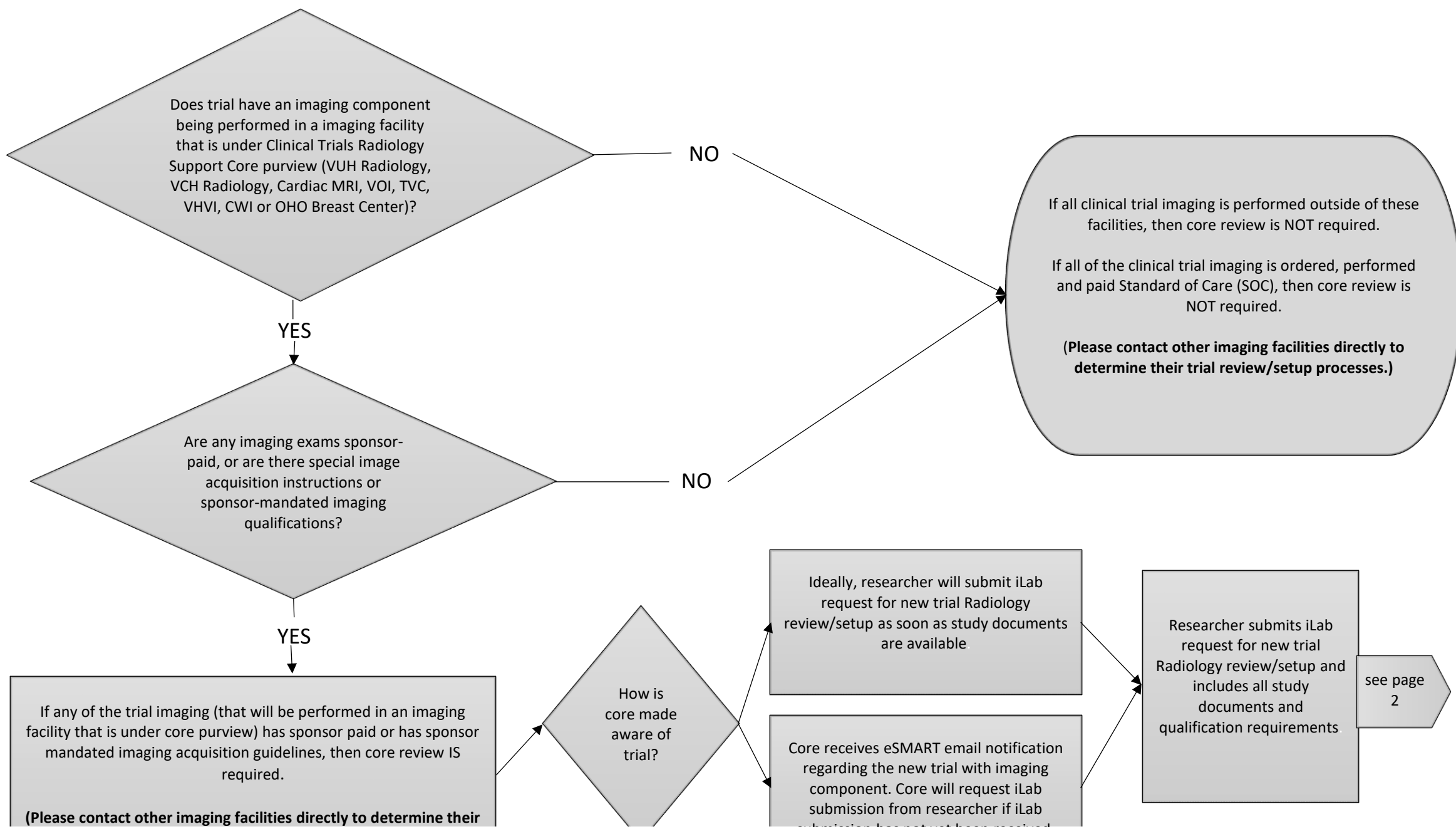
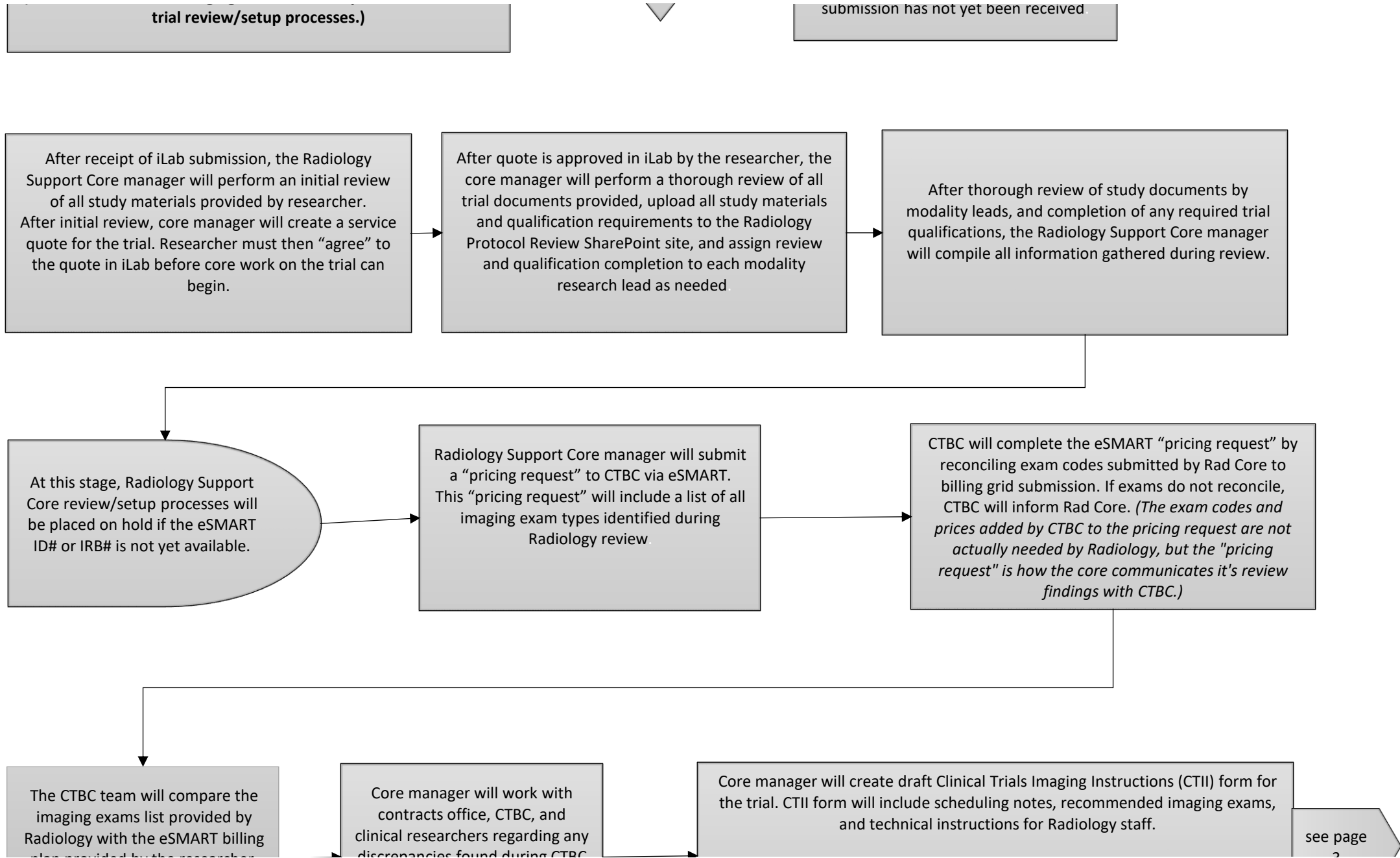


Clinical Trials Radiology Support Core New Trial Workflow Basics



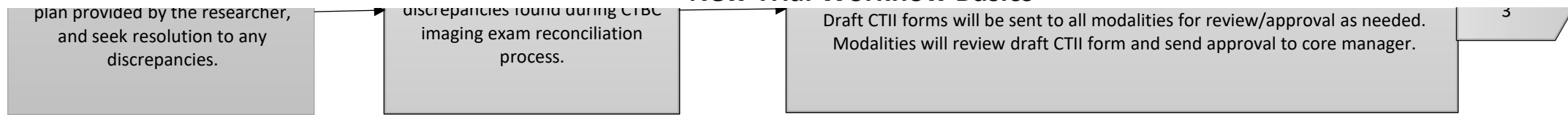
Clinical Trials Radiology Support Core

New Trial Workflow Basics

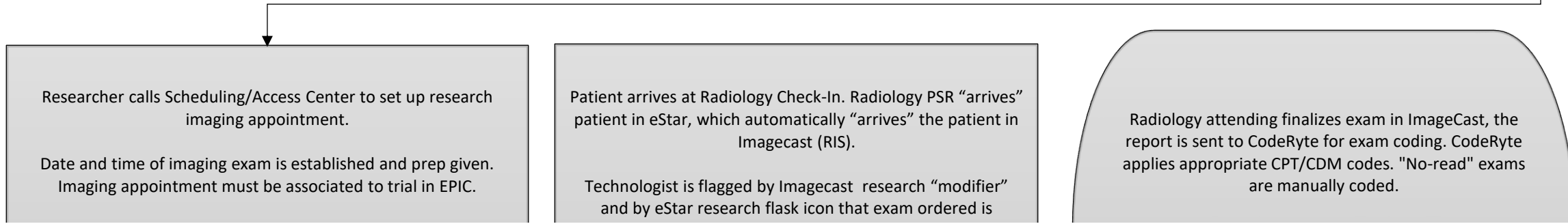
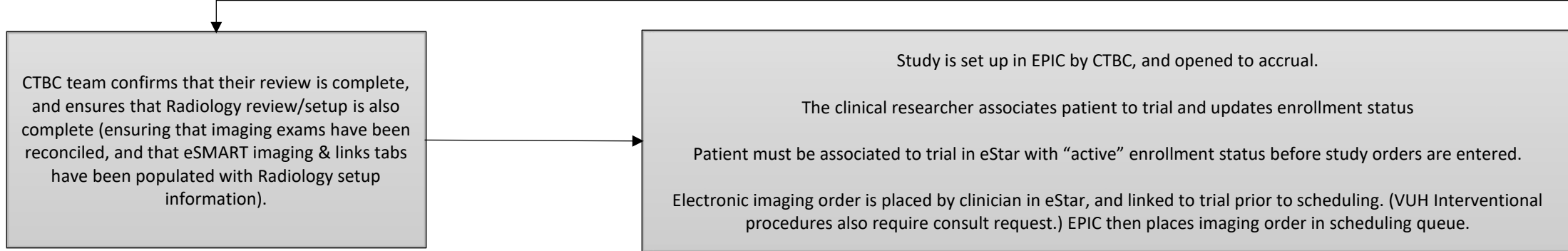
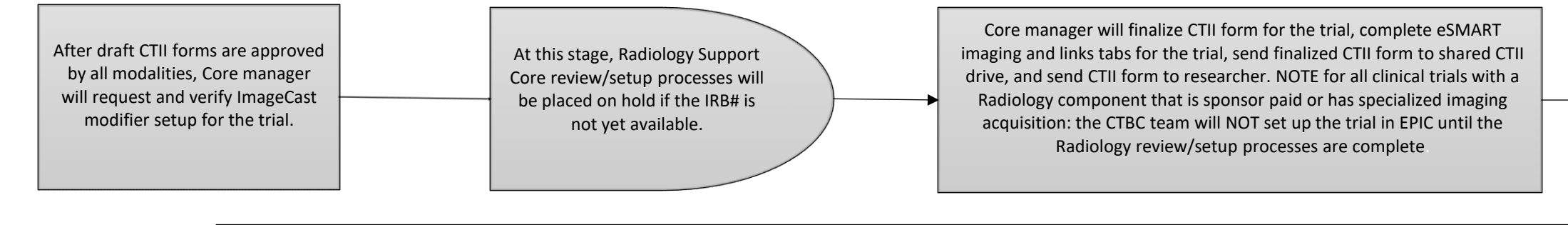


Clinical Trials Radiology Support Core

New Trial Workflow Basics



3



Clinical Trials Radiology Support Core

New Trial Workflow Basics

Imaging order is automatically sent from EPIC to Imagecast (RIS) and tagged with Radiology research "modifier" number associated with the trial (same number that is listed on CTII form).

Imaging payor is determined by visit chosen by research staff from study calendar in eStar.

research related. Technologist reviews CTII form for acquisition instructions for trial, and performs exam.

When requested via iLab, core team member prepares de-identified image data and completes data transmittal form (PRN) for researcher.

If an "exception" occurs during CodeRyte processing, a Radiology coder will review and resolve. Charges are then sent to EPIC for billing.

After charges are posted to EPIC, any research-related charges are routed to a CTBC work-queue for review.