

## Fellowship Faculty

### **Agnes B. Fogo, M.D.**

John L. Shapiro Professor of Pathology,  
Microbiology and Immunology  
Director, Renal Pathology Fellowship  
Professor of Medicine and Pediatrics  
Director, Division of Renal Pathology/  
Electron Microscopy

### **Paisit Pauksakon, M.D.**

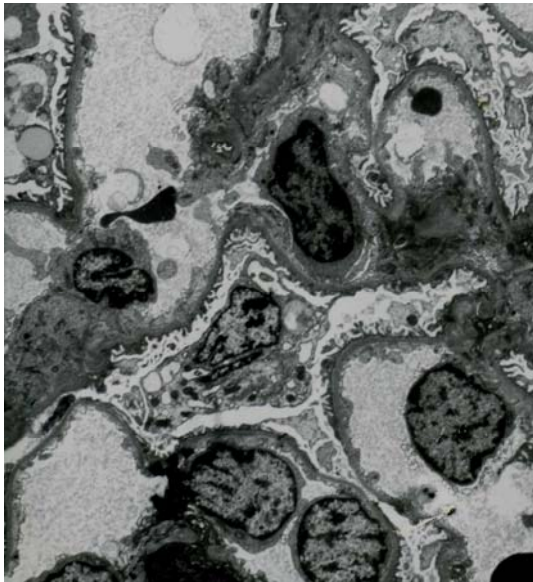
Professor of Pathology, Microbiology  
and Immunology  
Associate Director, Renal Pathology  
Fellowship

### **Mark Lusco, M.D.**

Assistant Professor of Pathology,  
Microbiology and Immunology

### **Meghan E. Kapp, M.D., M.S.**

Assistant Professor of Pathology,  
Microbiology and Immunology



Interested applicants should submit a cover letter, application\*, CV, personal statement, USMLE scores, passport size photo, three letters of recommendation, and ECFMG certificate (if applicable) to:

Agnes B. Fogo, M.D.  
Vanderbilt University Medical Center  
Pathology, Microbiology and Immunology  
Renal/EM Division  
MCN C-3310  
1161 21st Avenue South  
Nashville, TN 37232

agnes.fogo@vumc.org

\*Application and pertinent information  
can be found under Graduate Medical  
Education at:

<https://www.vumc.org/gme/13198>

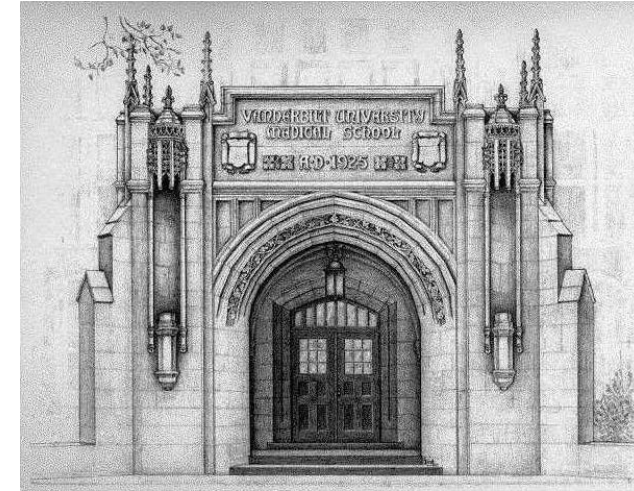
VANDERBILT UNIVERSITY  School of Medicine



Vanderbilt University Medical Center  
Pathology, Microbiology and Immunology  
Renal/EM Division  
MCN C-3310  
1161 21st Avenue South  
Nashville, TN 37232

(615) 322-3070  
agnes.fogo@vumc.org

VANDERBILT  UNIVERSITY  
MEDICAL CENTER

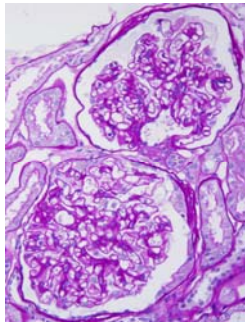


*Vanderbilt  
University  
Medical  
Center  
Renal  
Pathology  
Fellowship*

# *Renal Pathology at Vanderbilt University Medical Center*

The Division of Renal Pathology/ Electron Microscopy in the Department of Pathology at Vanderbilt University Medical Center, Nashville, Tennessee, offers an ACGME accredited fellowship in Renal Pathology each year starting on July 1. Either a one-year-fellowship with clinical focus

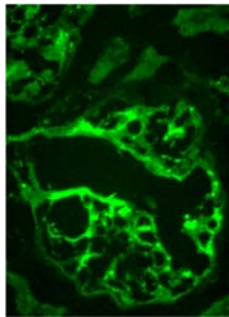
or a two-year fellowship with clinical training and in-depth clinicopathologic or basic research is available.



The fellowship is under the direction of Agnes B. Fogo, M.D., John L. Shapiro Chair of Pathology, Professor of Medicine and Pediatrics, at Vanderbilt University Medical Center. Paisit Paueksakon, M.D., Professor of Pathology, is a faculty member of the Division of Renal Pathology and he participates actively in the fellows' training, as do Mark Lusco, M.D. and Meghan Kapp, M.D. The Fellow is directly involved in the diagnostic evaluation of all renal biopsies received annually by the Renal Pathology Laboratory at Vanderbilt. These cases represent largely native (70%) as well as transplant (30%) renal biopsies, with both adult and pediatric cases. The current volume is about 1,600 cases/year, of

which 70% are cases from outside hospitals in the region for primary diagnosis and consults from other countries.

The Fellow will be expected to work independently in preparing cases for sign-out by the faculty using light, immunofluorescence and electron microscopy. Fellows will also present cases at clinical conferences held jointly with the Nephrology and Renal Transplant Divisions, have ample exposure to



clinical teaching conferences, actively participate in teaching renal pathology to medical students, residents and nephrology fellows, and attend weekly departmental surgical pathology slide conferences. Fellows are expected to pursue an academic project, e.g., clinical teaching case reports. Fellows are encouraged, and funds are generally available, to present their work at a scientific meeting during their training, such as the USCAP annual meeting. Multiple past fellows have won Renal Pathology Society Pathologist-in-Training awards for their USCAP abstracts.

The Renal Pathology fellows are part of a growing departmental graduate medical education community that includes 25 residents, as well as fellows in Anatomic Pathology, Cytopathology, Pediatric Pathology, Transfusion Medicine, Gastrointestinal Pathology, Neuropathology, Hematopathology, Molecular Genetic Pathology, Microbiology, Laboratory Genetics and Genomics and Clinical Chemistry.

The Renal Pathology fellows are part of a growing departmental graduate medical education community that includes 25 residents, as well as fellows in Anatomic Pathology, Cytopathology, Pediatric Pathology, Transfusion Medicine, Gastrointestinal Pathology, Neuropathology, Hematopathology, Molecular Genetic Pathology, Microbiology, Laboratory Genetics and Genomics and Clinical Chemistry.

Managing more than 2 million patient visits each year, Vanderbilt University Medical Center (VUMC) is one of the largest academ-

ic medical centers in the Southeast, and is the primary resource for specialty and primary care in hundreds of adult and pediatric specialties for patients throughout Tennessee and the Mid-South. The School of Medicine's biomedical research program is among the nation's top 10 in terms of National Institutes of Health peer review funding, receiving more than \$500 million in public and private awards during 2016. The Medical Center is the region's locus of postgraduate medical education, with over 1,000 residents and fellows training in more than 100 specialty areas. Located in the heart of Nashville, Tennessee, Vanderbilt University is one of the nation's leading research and teaching institutions with undergraduate medical program contiguous on the same campus. Nashville, the capital of Tennessee, is a growing cosmopolitan area with a population exceeding 1.2 million, diverse entertainment, excellent schools and ready access to outdoor activities.



VANDERBILT  UNIVERSITY  
MEDICAL CENTER

Vanderbilt University Medical Center  
Pathology, Microbiology and Immunology  
Renal/EM Division  
MCN C-3310  
1161 21st Avenue South  
Nashville, TN 37232

(615) 322-3070  
agnes.fogo@vumc.org