

Fellowship Faculty



Jennifer Gordetsky, MD
Program Director;
Professor of Pathology,
Microbiology, and
Immunology

Giovanna Giannico, MD

Associate Professor of Pathology,
Microbiology, and Immunology;
Chief of Genitourinary Pathology

Aida Valencia, MD

Assistant Professor of Pathology,
Microbiology, and Immunology



Interested applicants should submit a cover letter, application*, CV, personal statement, USMLE scores, passport size photo, three letters of recommendation, and ECFMG certificate (if applicable) to:

Vanderbilt University Medical Center
Pathology, Microbiology and Immunology
Graduate Education Office
Attn: GU Pathology Fellowship
1161 21st Ave South
CC-3322 MCN
Nashville, TN 37232-2561
path.fellow@vumc.org

*Application and pertinent information can be found under Graduate Medical Education at:

<https://www.vumc.org/gme/13198>

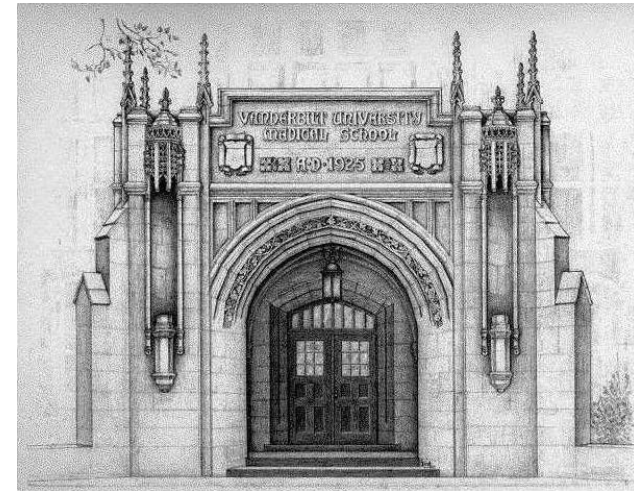
VANDERBILT UNIVERSITY  School of Medicine



Vanderbilt University Medical Center
Pathology, Microbiology and Immunology
Graduate Education Office
Attn: GU Pathology Fellowship
1161 21st Ave South
CC-3322 MCN
Nashville, TN 37232-2561

(615) 343-4882 x2
path.fellow@vumc.org

VANDERBILT  UNIVERSITY
MEDICAL CENTER

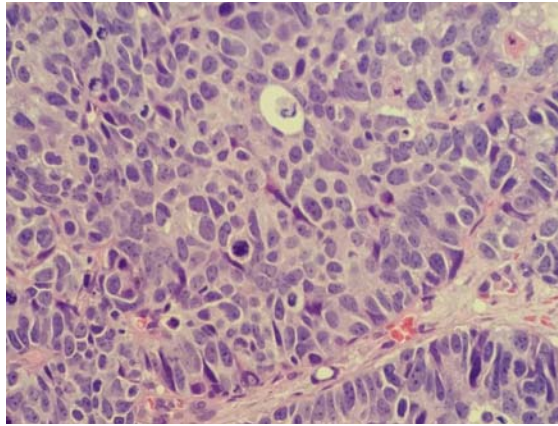


*Vanderbilt
University
Medical Center
Genitourinary
Surgical
Pathology
Fellowship*

Genitourinary Surgical Pathology at Vanderbilt University Medical Center

The Department of Pathology, Microbiology, and Immunology offers a one-year fellowship in genitourinary surgical pathology. The fellowship responsibilities include previewing cases and writing up diagnostic reports prior to review with the urological surgical pathology attending on service. Although the fellow is not required to gross surgical pathology specimens, resident education around general surgical pathology, including oversight of histologic diagnoses and guidance over resident grossing techniques are expected. The goal will be to achieve diagnostic excellence in GU surgical pathology. During the fellowship, all sign-out of GU surgical pathology cases will be performed with an attending pathologist. Responsibilities also include a research component with expectations of presentation at a na-

tional meeting and submission of at least one manuscript for publication prior to completion of the fellowship. Protected elective time (8 weeks) will be available for rotation on non-genitourinary surgical pathology services or research time.



Applications are accepted twenty-four months before the intended start date for training. Interviews are granted on a revolving basis. One candidate is selected each year. Candidates must have completed either an AP3 or APCP4 program. Fellowship experience in surgical pathology is also desirable.

Vanderbilt University Medical Center and Vanderbilt Children's Hospital are expanding in many areas with a top NCI-designated Comprehensive Cancer Center, multifaceted organ and stem cell transplant programs innovative educational programs, clinical and translational research and basic science programs.

The Genitourinary Surgical Pathology fellows are part of a growing departmental

graduate medical education community that includes 25 residents, as well as fellows in Surgical Pathology, Cytopathology, Renal Pathology, Hematopathology, Neuropathology, Molecular Genetic Pathology, Microbiology and Clinical Chemistry.

Located in the heart of Nashville, Tennessee, Vanderbilt University is one of the nation's leading research and teaching institutions with undergraduate medical program contiguous on the same campus. Nashville, the capital of Tennessee, is a growing cosmopolitan area with a population exceeding 1.2 million, diverse entertainment, excellent schools and ready access to outdoor activities.



VANDERBILT UNIVERSITY
MEDICAL CENTER

Pathology, Microbiology and Immunology
Graduate Education Office
Attn: GU Pathology Fellowship
1161 21st Ave South
CC-3322 MCN
Nashville, TN 37232-2561
(615) 343-4882 x2
path.fellow@vumc.org

