

## Fellowship Faculty

### Safia N. Salaria, MD

Program Director  
Associate Professor of Pathology,  
Microbiology, and Immunology

### Won Jae Huh, MD, PhD

Assistant Professor of Pathology,  
Microbiology, and Immunology

### Mary Kay Washington, MD, PhD

Professor of Pathology, Microbiology, and  
Immunology

### Annika Windon, MD

Assistant Professor of Pathology,  
Microbiology, and Immunology



Interested applicants should submit a cover letter, application\*, CV, personal statement, USMLE scores, passport size photo, three letters of recommendation, and ECFMG certificate (if applicable) to:

Vanderbilt University Medical Center  
Pathology, Microbiology and Immunology  
Graduate Education Office  
Attn: Gastrointestinal Pathology Fellowship  
1161 21st Ave South  
CC-3322 MCN  
Nashville, TN 37232-2561  
path.fellow@vumc.org

\*Application and pertinent information can be found under Graduate Medical Education at:

<https://www.vumc.org/gme/13198>

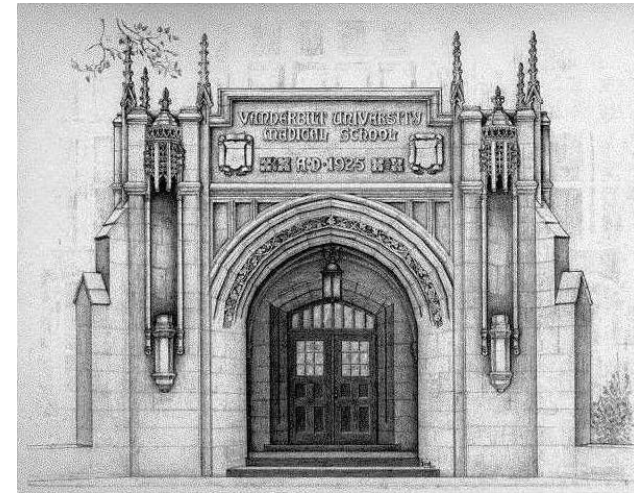
VANDERBILT UNIVERSITY  School of Medicine



Vanderbilt University Medical Center  
Pathology, Microbiology and Immunology  
Graduate Education Office  
Attn: Gastrointestinal Pathology Fellowship  
1161 21st Ave South  
CC-3322 MCN  
Nashville, TN 37232-2561

(615) 343-4882 x2  
path.fellow@vumc.org

VANDERBILT  UNIVERSITY  
MEDICAL CENTER

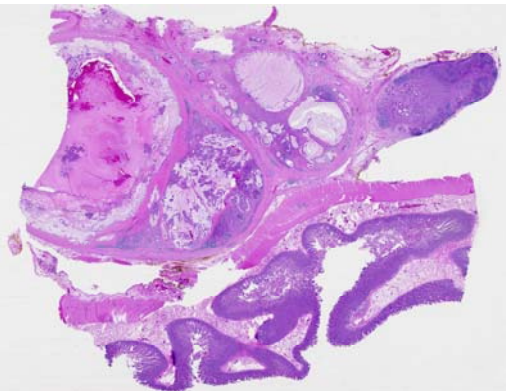


*Vanderbilt  
University  
Medical Center  
Gastrointestinal  
Pathology  
Fellowship*

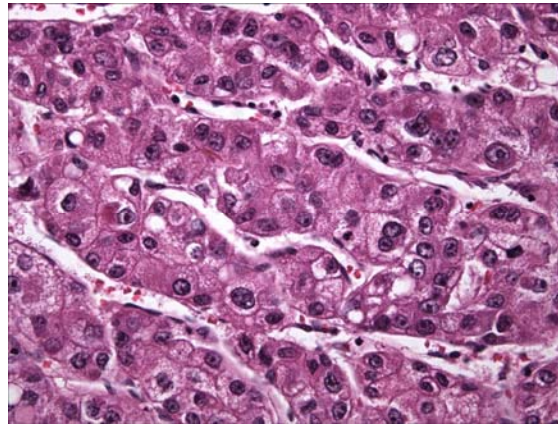
# *Gastrointestinal Pathology at Vanderbilt University Medical Center*

The Department of Pathology, Microbiology, and Immunology offers a one-year fellowship in gastrointestinal and liver pathology. The fellowship includes diagnostic responsibilities in adult and pediatric gastrointestinal and hepatobiliary pathology, liver transplant pathology, and pancreatic pathology. The fellow also participates in medical student and resident teaching and presents at multidisciplinary clinical conferences. Clinical, translational, and/or basic science research projects are encouraged.

Applications are accepted twenty-four months before the intended start date for training. Interviews are granted on a revolving basis, and a decision is usually made approximately eighteen months before the start of training. One candidate is selected each year after an on-site interview. Candidates must have completed either an AP3 or APCP4 program. Fellowship experience in surgical pathology is also desirable.



Vanderbilt University Medical Center is home to Vanderbilt University Adult Hospital, The Monroe Carell Jr. Children's Hospital at Vanderbilt, the Vanderbilt Psychiatric Hospital and the Vanderbilt Stallworth Rehabilitation Hospital. Managing more than 2 million patient visits each year, Vanderbilt University Medical Center (VUMC) is one of the largest academic medical centers in the Southeast, and is the primary resource for specialty and primary care in hundreds of adult and pediatric specialties for patients throughout Tennessee and the Mid-South.



The School of Medicine's biomedical research program is among the nation's top 10 in terms of National Institutes of Health peer review funding, receiving more than \$500 million in public and private awards during 2016. The Medical Center is the region's locus of postgraduate medical education, with over 1,000 residents and fellows training in more than 100 specialty areas. Vanderbilt University Adult Hospital and the Monroe Carell Jr. Children's Hospital at Vanderbilt are recognized each year by U.S. News & World Report's Best Hospitals rankings as national leaders, with 19 nationally ranked adult and pediatric specialties. Through the Vanderbilt Health Affiliated Network, VUMC is working with over 60 hospitals and 5,000 clinicians across Tennessee and five neighboring states to share best practices and bring value-driven and cost-effective health care to the Mid-South.

Vanderbilt Medical Center is part of the 330-acre Vanderbilt University campus in a sophisticated, diverse residential community about 1.5 miles from downtown Nashville, with numerous shops and restaurants within easy walking distance. Nashville, the capital of Tennessee, is the site of numerous colleges and universities, two medical schools, and several large teaching hospitals. The city has an extensive parks system, a symphony orchestra, opera, ballet, performing arts center, zoo, several museums, The Country Music Hall of Fame and the Grand Ole Opry. The city offers a wide variety of cultural, educational, and recreational opportunities, including a professional football team and hockey team. The Nashville Metropolitan area is home to about 1.2 million inhabitants.



**VANDERBILT UNIVERSITY**  
**MEDICAL CENTER**

Pathology, Microbiology and Immunology  
Graduate Education Office  
Attn: Gastrointestinal Pathology Fellowship  
1161 21st Ave South  
CC-3322 MCN  
Nashville, TN 37232-2561  
(615) 343-4882 x2  
path.fellow@vumc.org