

## Fellowship Faculty

### **Kim Ely, M.D.**

Director, Cytopathology Fellowship  
Training Program

Associate Professor of Pathology,  
Microbiology and Immunology  
Director, Fine Needle Aspiration Clinic  
Medical Director, Cytology

### **Alice Coogan, M.D.**

Professor of Pathology,  
Microbiology and Immunology  
Chair, Pathology Microbiology and Immunol-  
ogy

Executive Medical Director of Anatomic  
Pathology and Cytopathology  
Vice Chair for Anatomic Pathology

### **Margaret Compton,, M.D.**

Assistant Professor of Pathology,  
Microbiology and Immunology

### **Rosana Eisenberg, M.D.**

Associate Professor of Pathology,  
Microbiology and Immunology

### **Joyce Johnson, M.D.**

Professor of Pathology, Microbiology and  
Immunology

Director, Anatomic Pathology, VA Medical  
Center

### **Edward C. McDonald, M.D., FASCP, FCAP**

Associate Professor of Pathology,  
Microbiology and Immunology

### **Stephen J. Schultenover, M.D., FASCP, FCAP**

Associate Professor of Pathology,  
Microbiology and Immunology

### **Huiying Wang, M.D.**

Assistant Professor of Pathology,  
Microbiology and Immunology

### **Vivian Weiss, M.D., PhD.**

Assistant Professor of Pathology,  
Microbiology and Immunology

Interested applicants should submit a  
cover letter, application\*, CV, personal  
statement, USMLE scores, passport size  
photo, three letters of recommendation,  
and ECFMG certificate (if applicable) to:

Vanderbilt University Medical Center  
Pathology, Microbiology and Immunology  
Graduate Education Office  
Attention: Cytopathology Fellowship  
1161 21st Ave. South, CC3322 MCN  
Nashville, TN 37232-2561

path.fellow@vumc.org

\*Application and pertinent information  
can be found under Graduate Medical  
Education at:

<https://www.vumc.org/gme/13198>

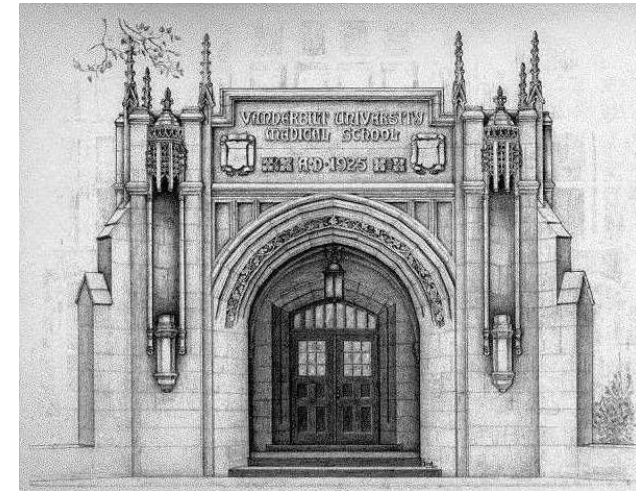
VANDERBILT UNIVERSITY  School of Medicine



Vanderbilt University Medical Center  
Pathology, Microbiology and Immunology  
Graduate Education Office  
Attention: Cytopathology Fellowship  
1161 21st Ave. South  
CC-3322 MCN  
Nashville, TN 37232-2561

(615) 343-4882 x2  
path.fellow@vumc.org

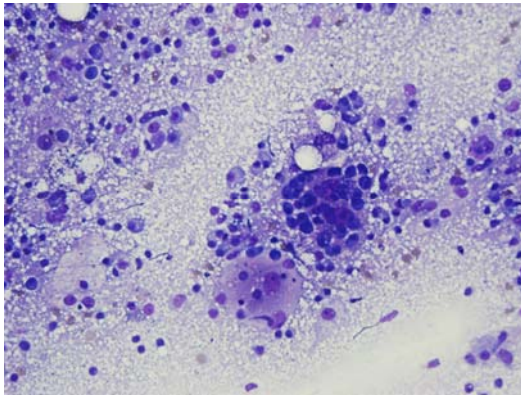
VANDERBILT  UNIVERSITY  
MEDICAL CENTER



*Vanderbilt  
University  
Medical Center  
Cytopathology  
Fellowship*

## *Cytopathology at Vanderbilt University Medical Center*

The Cytopathology Fellowship provides subspecialty training in Cytopathology in preparation for certification in specialty qualification in Cytopathology by the American Board of Pathology. Fellows will be trained in gynecologic cytology and non-gynecologic cytology including fine needle aspiration (FNA) cytology with acquisition of diagnostic competence and technical skill. Training in effective communication with patients and clinicians is emphasized as well as training in cytopathology laboratory management including QA/QC training and improvement, with the ultimate goal of optimizing patient care.

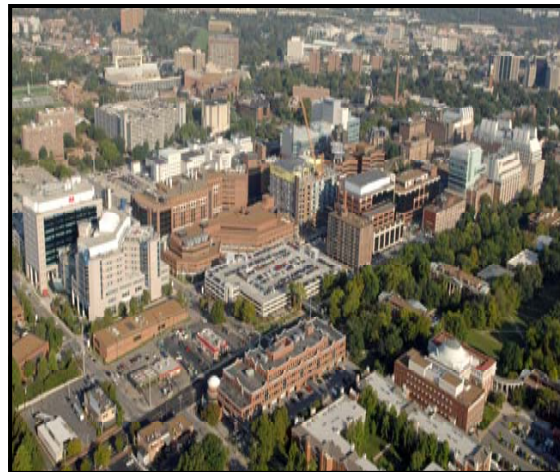


Vanderbilt University receives 20,000 pap smears, 9,000 non-gyn specimens, 3,000 fine needle aspiration biopsies annually. The fellow has one month of elective time during the fellowship and may elect to do research or to spend time on a surgical pathology subspecialty rotation such as Gastrointestinal, Breast, GYN, Pediatric Pathology or Genitourinary.

Vanderbilt University Medical Center is home to Vanderbilt University Adult Hospital, The

Monroe Carell Jr. Children's Hospital at Vanderbilt, the Vanderbilt Psychiatric Hospital and the Vanderbilt Stallworth Rehabilitation Hospital. Managing more than 2 million patient visits each year, Vanderbilt University Medical Center (VUMC) is one of the largest academic medical centers in the Southeast, and is the primary resource for specialty and primary care in hundreds of adult and pediatric specialties for patients throughout Tennessee and the Mid-South.

The School of Medicine's biomedical research program is among the nation's top 10 in terms of National Institutes of Health peer review funding, receiving more than \$500 million in public and private awards during 2016. The Medical Center is the region's locus of postgraduate medical education, with over 1,000 residents and fellows training in more than 100 specialty areas. Vanderbilt University Adult Hospital and the Monroe Carell Jr. Children's Hospital at Vanderbilt are recognized each year by U.S. News & World Report's Best Hospitals rankings as national leaders, with 19 nationally ranked adult and pediatric specialties. Through the Vanderbilt Health Affiliated Network, VUMC is working with over 60 hospitals and 5,000 clinicians across Tennessee and five neighboring states to share best practices and bring value-driven and cost-effective health care to the Mid-South.



Vanderbilt Medical Center is part of the 330-acre Vanderbilt University campus in a sophisticated, diverse residential community about 1.5 miles from downtown Nashville, with numerous shops and restaurants within easy walking distance. Nashville, the capital of Tennessee, is the site of numerous colleges and universities, two medical schools, and several large teaching hospitals. The city has an extensive parks system, a symphony orchestra, opera, ballet, performing arts center, zoo, several museums, The Country Music Hall of Fame and the Grand Ole Opry. The city offers a wide variety of cultural, educational, and recreational opportunities, including a professional football team and hockey team. The Nashville Metropolitan area is home to about 1.2 million inhabitants.



**VANDERBILT UNIVERSITY**  
**MEDICAL CENTER**

Pathology, Microbiology and Immunology  
Graduate Education Office  
Attn: Cytopathology Fellowship  
1161 21st Ave. South  
Nashville, TN 37232-2561

(615) 343-4882 x2  
path.fellow@vumc.org