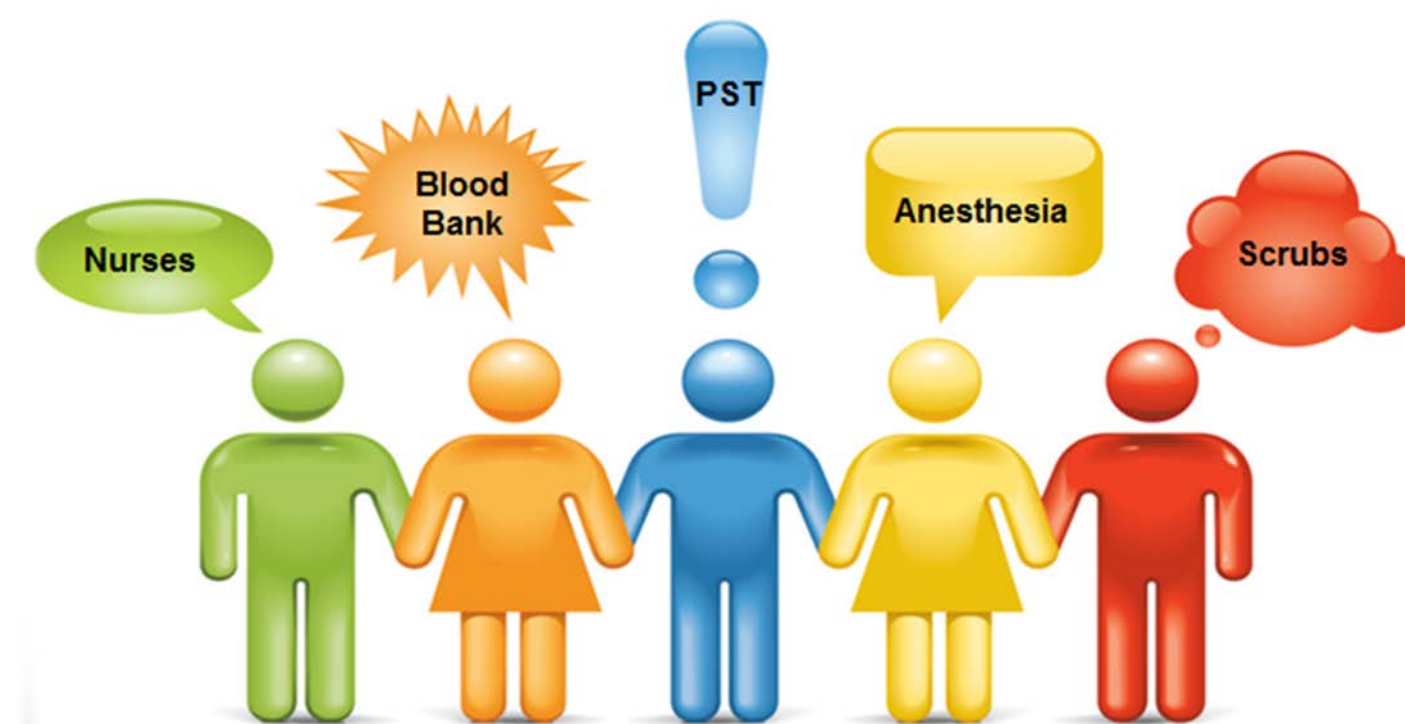


Background

- Blood products, including PRBC, platelets, plasma and cryoprecipitate, are procured at a considerable cost by medical institutions. Due to lack of a defined protocol for handling blood products for isolation cases in the OR, these products can be unnecessarily wasted.
- For example, during one isolation case, a cooler of blood products was carried into the OR and checked in. The products were not given, and the 3 units of RBCs and 2 FFP were wasted. This led to the realization that a protocol for blood use in isolation cases needed to be implemented.

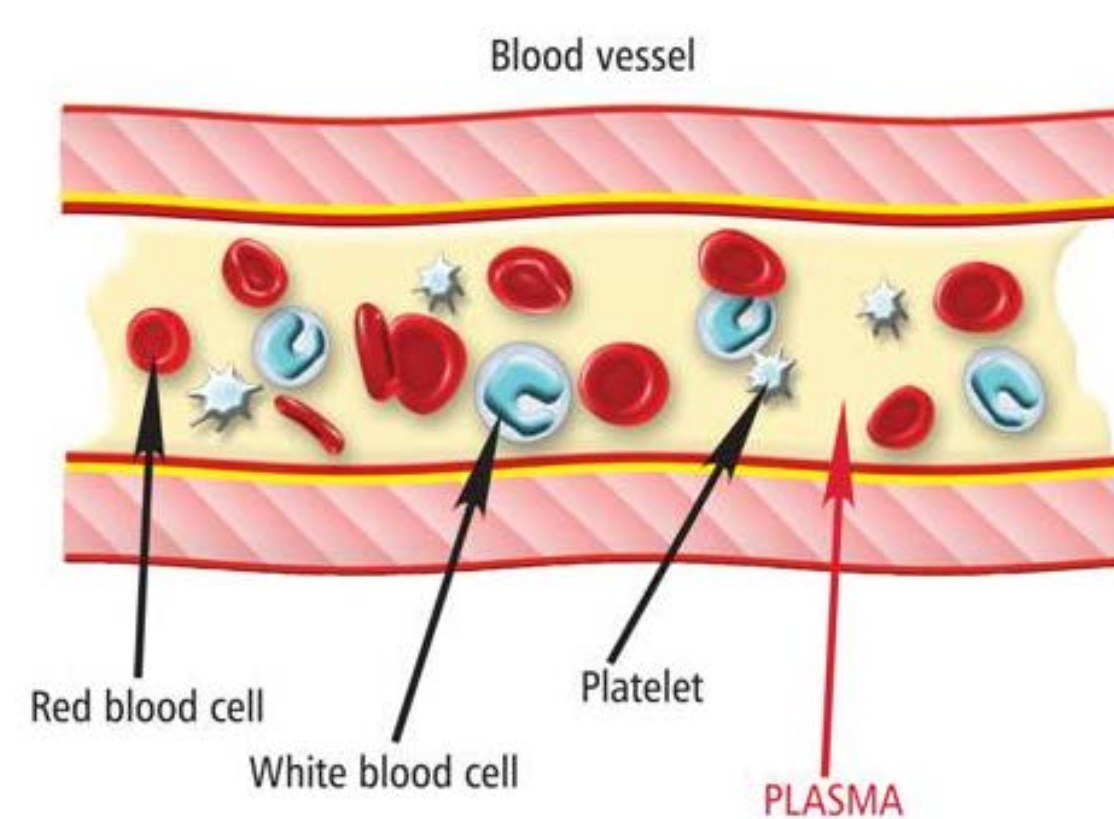


- Nurse or Anesthesia electronically communicates with the blood bank through WIZ. Specify to have PRBCs and Plasma in a cooler and place "Isolation" and room phone number under comments.
- Give verbal communication with the blood bank right before pickup of the product reminding them it's for an isolation case.
- The nurse or runner will place patient's blue card along with an isolation sticker in the OR window for blood pick up.

Direct Cost

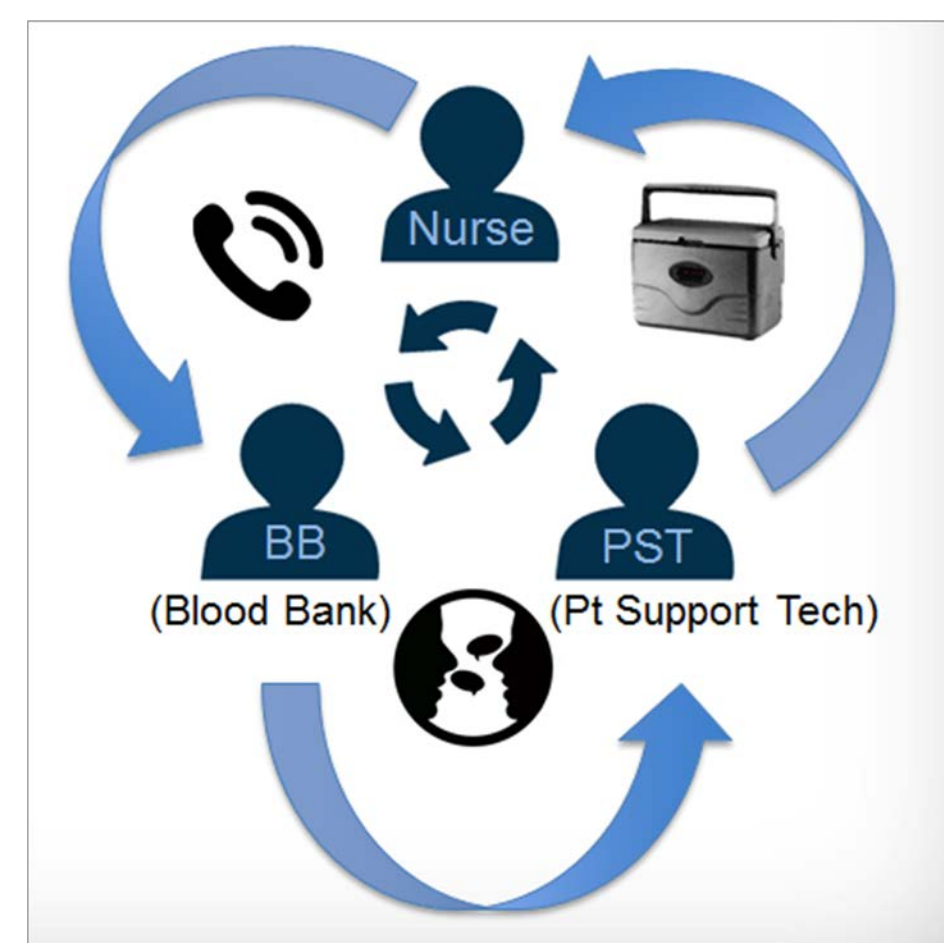
PRBC:	\$198.00
Platelets:	\$480.00
Plasma:	\$40.00
Cryoprecipitate:	\$44.86

Source: Marcella Woods, PhD, Health Systems Database Analyst, Vanderbilt University Medical Center, Quality, Safety & Risk Prevention Center for Clinical Improvement



Objective

Blood wastage from products entering isolation rooms can be reduced with better communication, education of staff, and clear labeling of the isolation room.

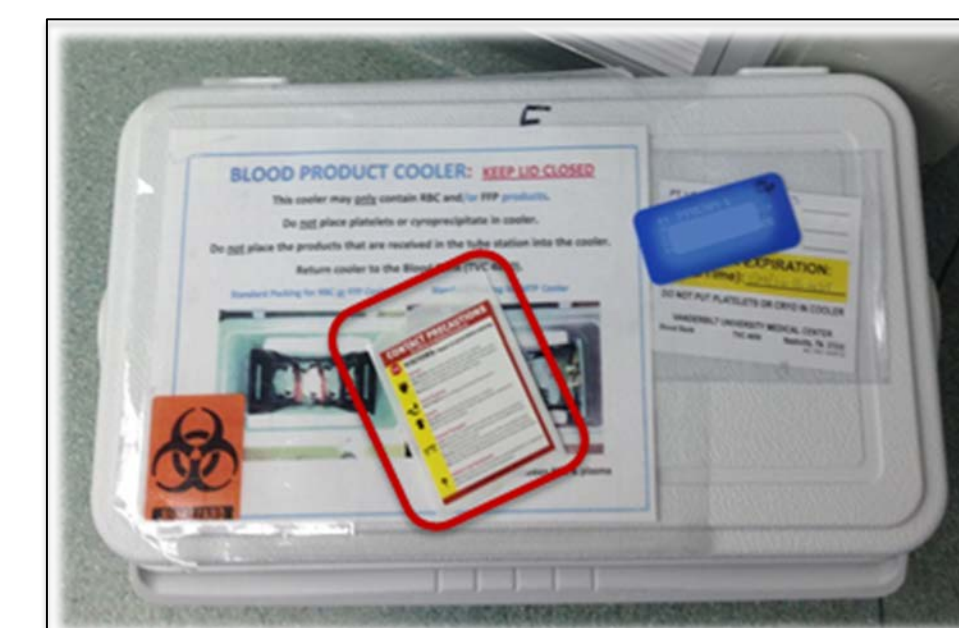


Solutions

- Designed sign for OR entry doors to remind staff to NOT carry blood products into Isolation rooms.



Sign created for OR entry doors to clearly designate an isolation room and to visually communicate the blood product rules.



- Inform the transporter that it is an isolation case when calling them for product pick up.
- Once the nurse calls the transporter (Patient Support Tech) for blood pick up, they will take both the blue card and isolation sticker to the blood bank for product pick up.
- The transporter will retrieve the cooler from the blood bank and place the isolation sticker on the cooler as a reminder NOT to carry the product into the room.
- The transporter will leave the cooler with a runner outside of the isolation room and products will only go into the room as needed.
- Clear communication of all changes were discussed with staff through a Periop In-service Presentation and a new Standard Operational Procedure was put into place.

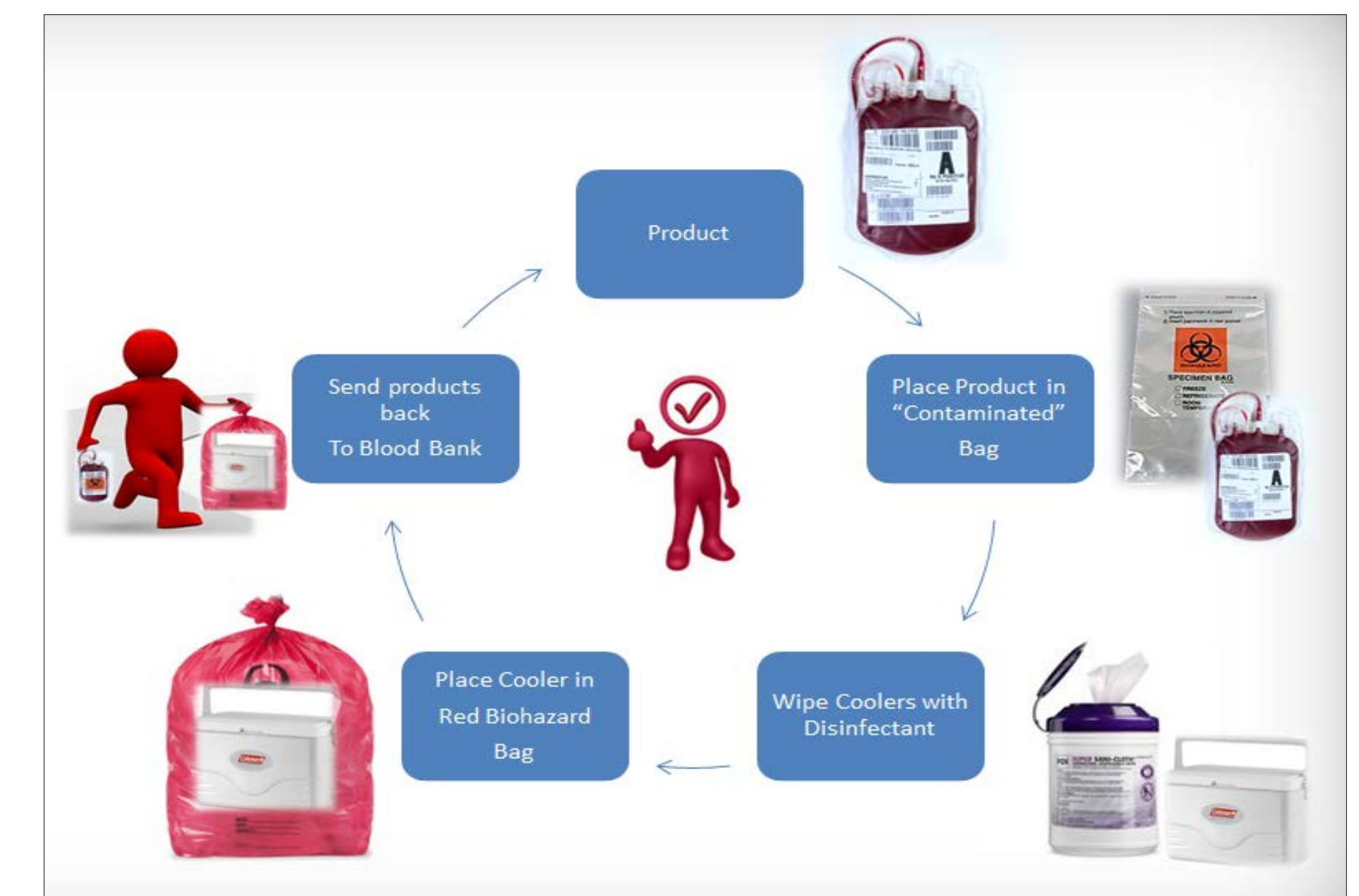
Standard Operating Procedure for Blood Products for Isolation Cases

Upon Ordering of Blood Product:

The blood product will be handed through the door upon request, and will be identified by 2 licensed personnel in the OR room at that time.

Return of Blood Product:

- For a blood product that has NOT entered the isolation OR, products delivered via tube or products delivered via cooler can be delivered back to the Blood Bank.
- For a blood product that HAS entered the isolation OR, and not used, the blood product must be returned in a clearly marked "contaminated" bag.
- For a cooler that has been taken into an isolation OR, the cooler must be wiped down with the appropriate OR equipment disinfectant cloth and placed in a red biohazard bag prior to being returned to the Blood Bank.



Wastage Results

In March 2014, a new protocol to reduce blood wastage in isolation cases of the OR was implemented. This final process has continued to develop over the years. All staff received clear communication and education on the changes. Door signs were put into use. From the point of implementation, RBC wastage due to entering an isolation case in Cardiothoracic Surgery has been reduced by 100%.

