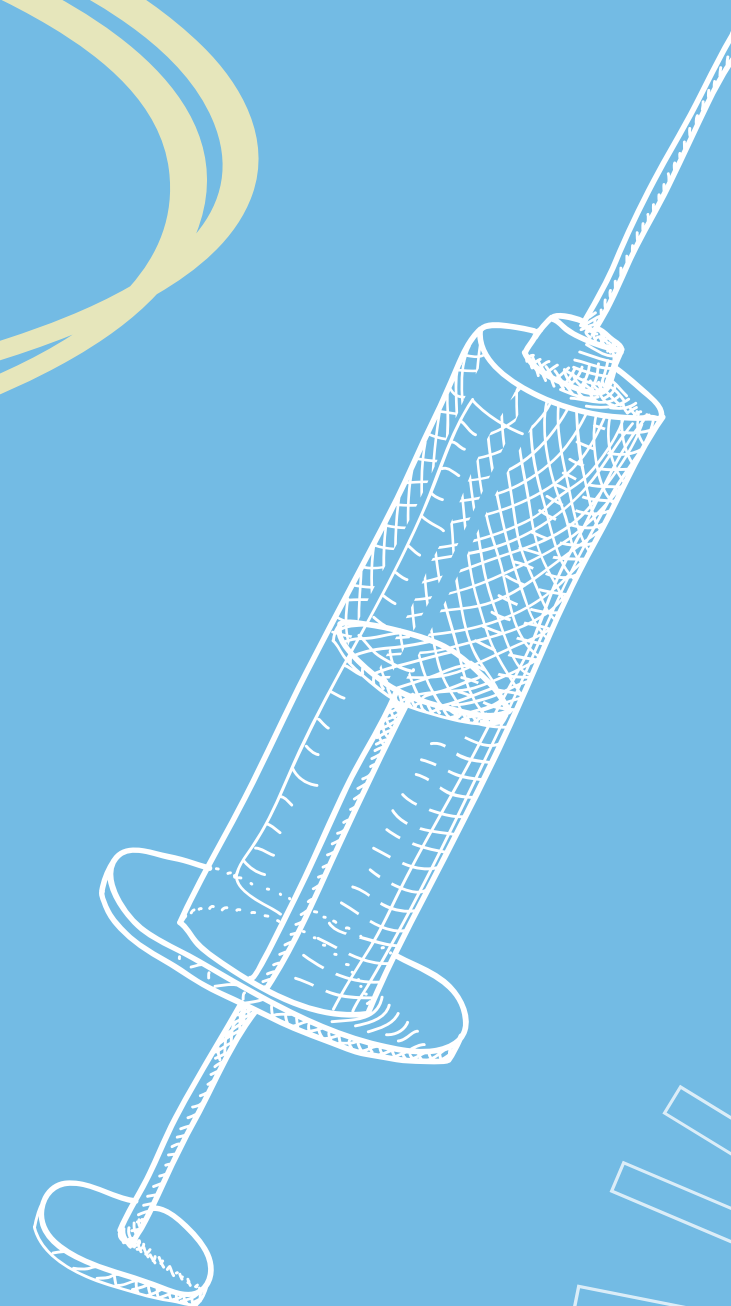
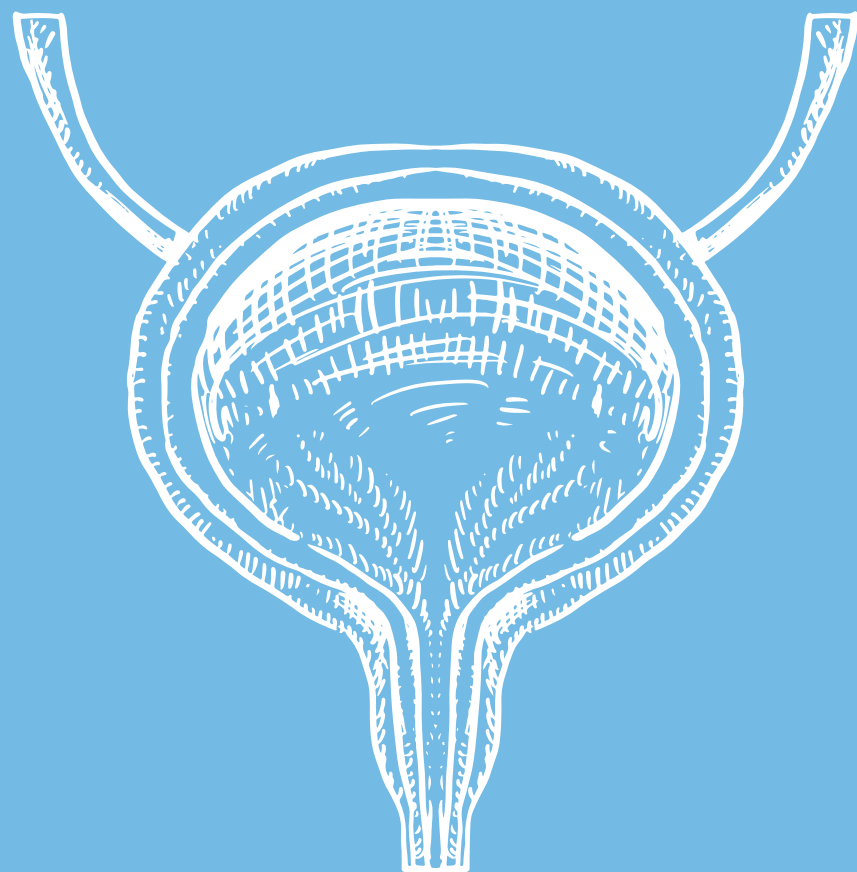
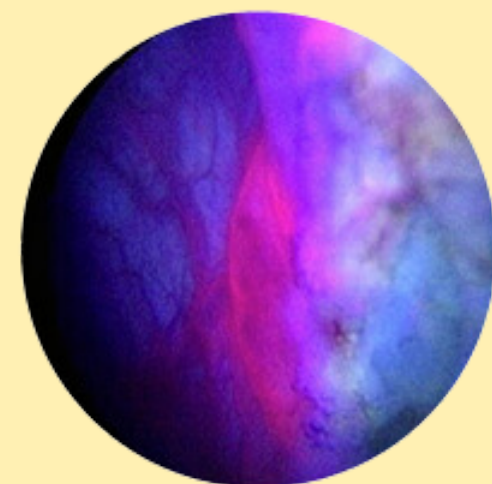
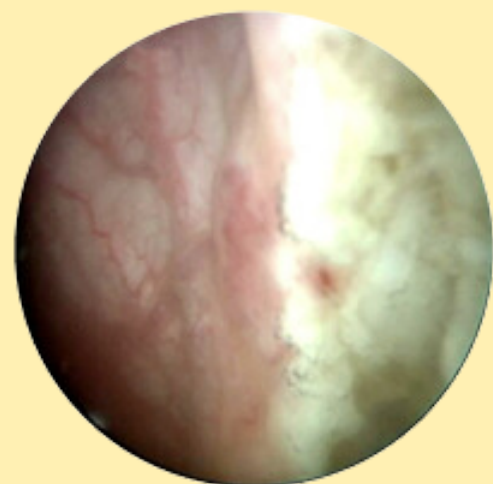


Cysview

HEXAMINOLEVULINATE HYDROCHLORIDE

● VUMC PERIOP ED ●





Overview

What patient population will I see this with?

Patients coming in for a cystoscopy to rule out or confirm a potential bladder cancer diagnosis.

What is Cysview?

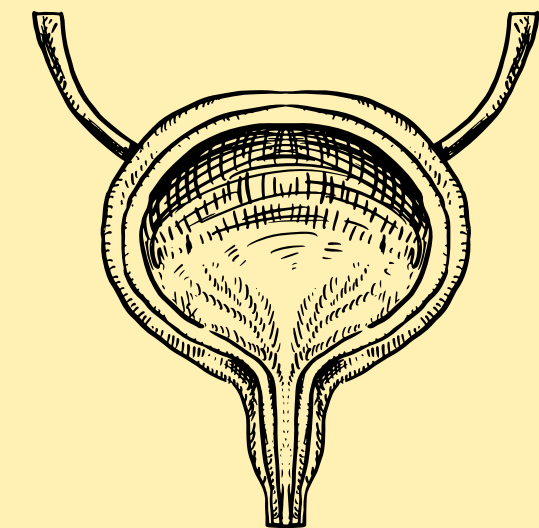
The medication, Cysview, is an optical imaging agent that aids in the identification of non-muscle invasive papillary bladder cancer for patients who have lesion(s) or suspected lesion(s).

Benefits of Cysview

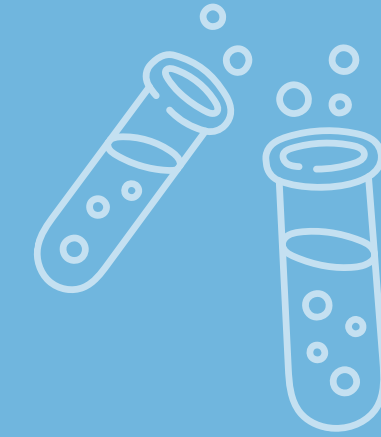
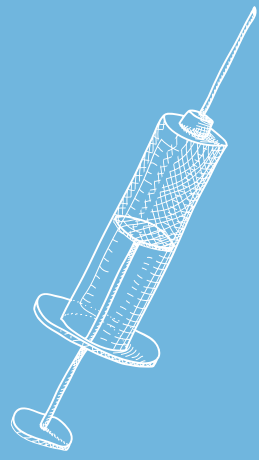
Small tumors can be difficult to identify when performed under traditional white light cystoscopy. Cysview with BLC increases tumor and margin visibility allowing the physician to remove it more completely.

How does it work?

Cysview causes cancerous tumors to glow bright pink when used in conjunction with the KARL STORZ D-Light C Photodynamic Diagnostic (PDD) system to perform Blue Light Cystoscopy (BLC). BLC will be performed after White Light Cystoscopy.



Cysview Instillation



Receiving Cysview

- Pharmacy will reconstitute and send Cysview in a 60cc syringe.
- Solution is colorless to pale yellow and clear to slightly opalescent, free from visible particles.
- If not being administered immediately, Cysview should be stored in the refrigerator.
- Cysview must be administered within 2 hours of reconstitution.

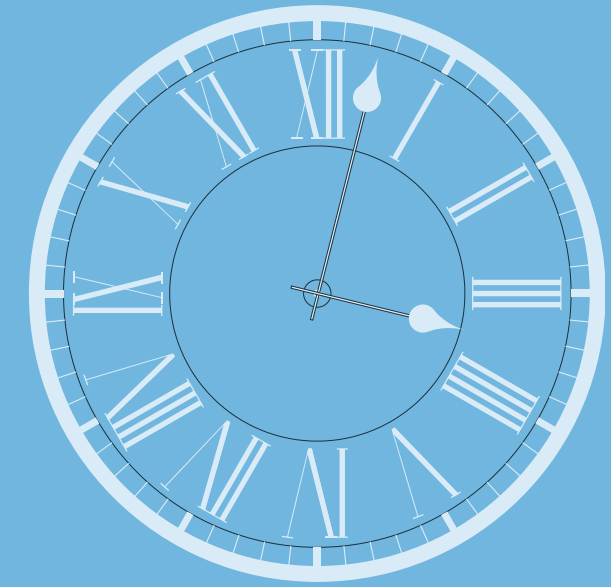
Administration

- Using sterile technique, insert urinary catheter and drain the bladder.
- Once the bladder is drained of urine, insert/connect the pharmacy-provided Cysview syringe into the catheter and slowly instill the entire syringe.
- Follow provider orders/unit protocol regarding catheter maintenance s/p Cysview instillation--if catheter to remain in place, will need to be capped/clamped for dwell time.

Patient Teaching

- The patient must hold Cysview in their bladder for a minimum of 1 hour, not to exceed 3 hours.
- During the 1 hour waiting period, the patient may move around freely.
- Educate the patient on normal symptoms associated with catheter placement i.e. bladder fullness and urgency

Cysview Timing



Practice Reminder

- The reconstituted solution must be administered within two hours. After two hours, the reconstituted solution must be discarded if it has not been administered.
- When you receive the reconstituted syringe from pharmacy, place in the refrigerator if you are not ready to instill immediately.

Begin the procedure within 3 hours of instillation

- The cystoscopic examination should be initiated no less than 1 or more than 3 hours after Cysview is instilled in the bladder.
- Ideally, the procedure should begin within 30 minutes after the evacuation of Cysview from the bladder.
- If the patient does not retain Cysview in the bladder for 1 hour, wait for the full hour to pass before the cystoscopic examination begins.
- Efficacy has not been established when Cysview is retained for less than 1 hour.



Potential Adverse Reactions

- Bladder Spasm
- Dysuria
- Hematuria
- Bladder Pain
- Procedural Pain
- Urinary Infection
- Headache



What to Learn More?

- www.cysview.com

