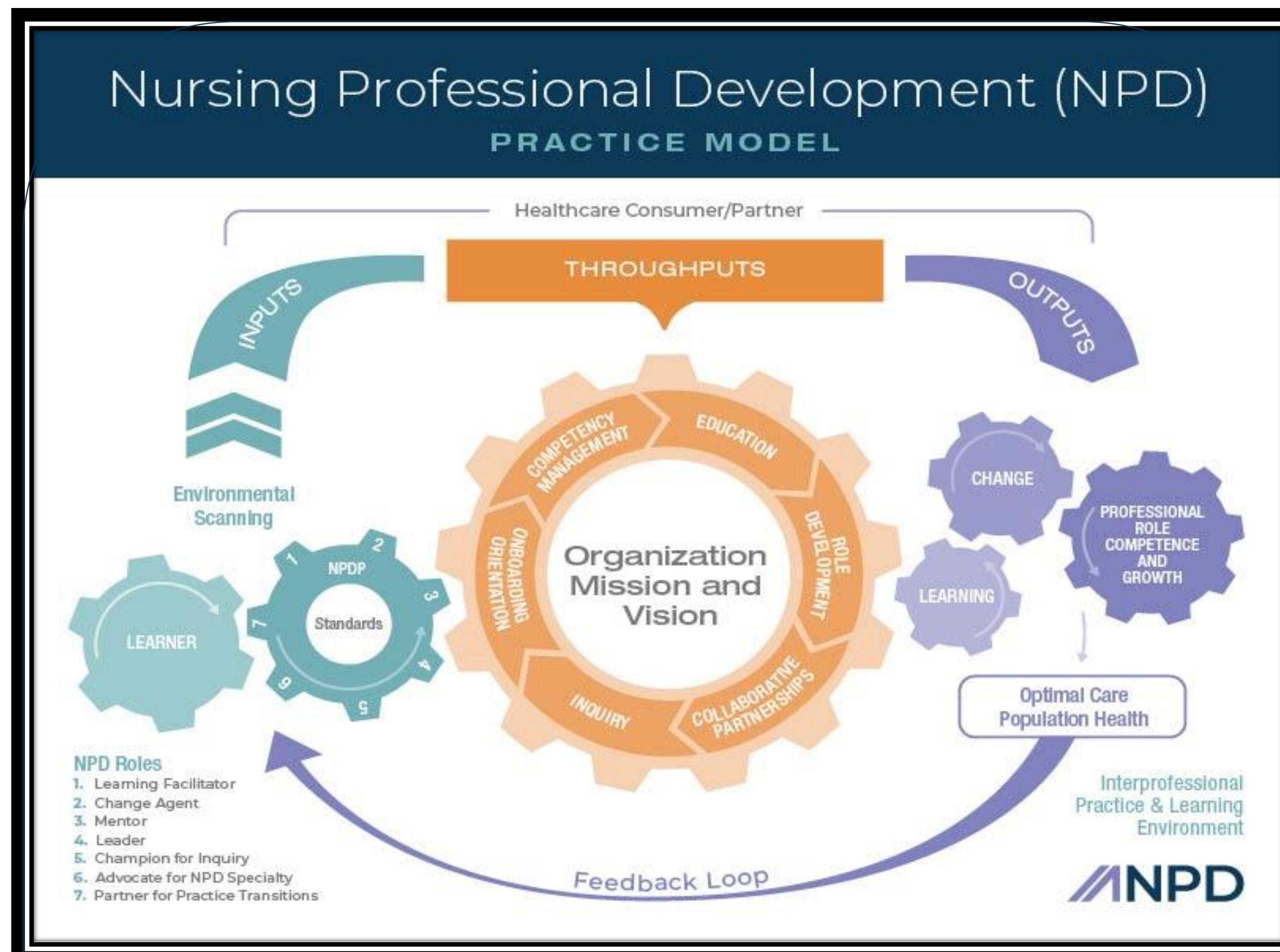


Applying the NPD Practice Model to Support Change at VBCH

Vanderbilt Bedford Hospital

VANDERBILT HEALTH

Patricia M. Tickle, MSN, RN, Nursing Education Specialist



The NPD Practice Model, published in Scope & Standards of Practice, 4th Ed. (2022), is a foundational document that describes the who, what, when, where, how, and why of NPD practice specialty. (Rainford et al., 2022)

INPUTS

- **Education Needs Assessment**
- **Unit Rounding**
- **Leadership Conversations**
- **Policy Changes**

THROUGHPUTS

- **Clinical Orientation**
- **Initial Unit Orientation Plan and Skills Checklist**
- **Continuing Education**
- **Annual Competencies**
- **Advanced Nursing Assessment courses**
- **Certification Review Courses**
- **Evidence Based Practice**
- **Elsevier Clinical Skills**
- **Professional Development**

OUTPUTS

- **Enhanced knowledge**
- **Skill development**
- **Practice change**
- **Improved patient outcomes**
- **Professional growth**
- **Certification achievements**
- **Confidence and competence**

FEEDBACK LOOP

- **Evaluation of quality data**
- **Inform, improve, and influence**
- **Shared governance**
- **Staff meetings**
- **Feedback becomes input**

References:

Rainford, M., Uland, C., Youl, Z. (2022). The Nursing Professional Development Practice Model. *Journal for Nurses in Professional Development* 38(3), 172-174. <https://doi.org/10.1097/NND.0000000000000878>