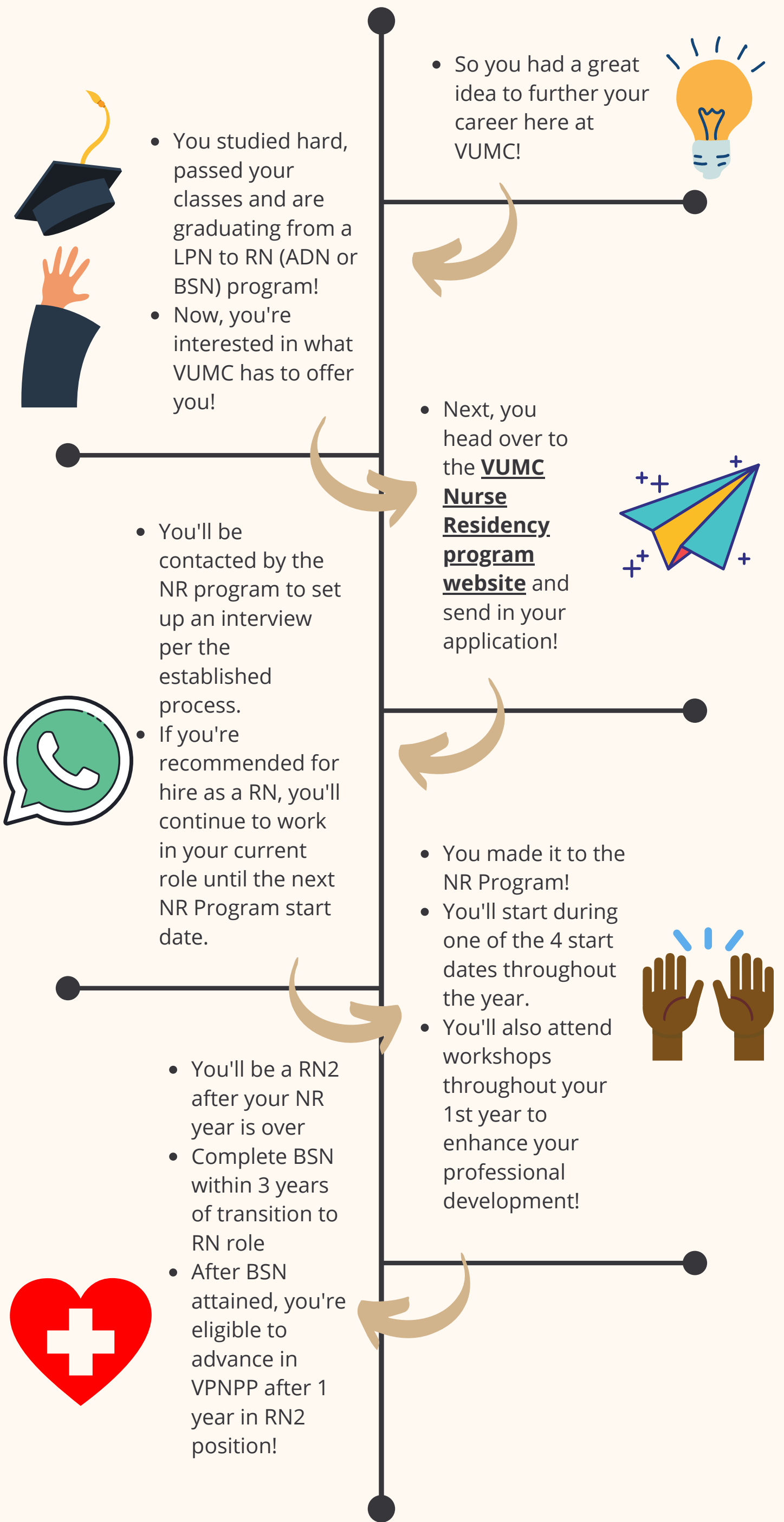


# LPN to RN

## Current Employee Nurse Residency Application Process



4 Cohorts Per Year



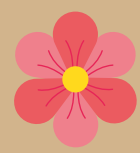
Summer



Fall



Winter



Spring

# LPN to RN

Current Employee Nurse Residency Application Process

## Frequently Asked Questions

### **If I am an LPN currently working at VUMC, graduating with my RN (ADN) can I apply for the Nurse Residency Program?**

Yes! There is certain eligibility for current VUMC Staff:

- **Bachelor's Degree in Nursing** from an NLN or CCNE accredited and state-approved program **AND** less than 1-year relevant experience

**OR**

- **Associate's Degree in Nursing\*** from an NLN or CCNE accredited and state-approved program **AND** at least one year of half-time employment in select clinical roles at VUMC

*\*If offered a position to the Nurse Residency Program: The offer is contingent upon attainment of the bachelor's in nursing degree within 3 years.*

### **If I am an LPN with Adult Ambulatory Clinics and my clinic has an RN opening can I apply for the Nurse Residency Program, specific for my clinic?**

Yes, pending approval from the hiring manager. However, you will still need to complete the entire process (application, interview). We recommend communicating about your potential application for the RN position to your supervisor and to [VUMCNurseResident@vumc.org](mailto:VUMCNurseResident@vumc.org).

### **If I am an LPN with Adult Ambulatory Clinics and my clinic does not have an opening can I apply for the Nurse Residency Program?**

Yes! You are eligible to apply for any open track within the Nurse Residency Program. Interviews will take place with the leaders from that specific track.

### **If I am an LPN with Adult Ambulatory Clinics and accepted to a position as an RN, do I start work immediately?**

No. You will remain in your LPN position until your specific start date in the Nurse Residency Program (pending successful passing of the NCLEX-RN).

### **If I am an LPN with Adult Ambulatory Clinics and completed a BSN or ADN program and want to work as a RN at VUMC do I have to enter in through the Nurse Residency Program?**

Yes. The current process for LPN employees who obtain their RN is to enter into that position through the Nurse Residency Program to ensure smooth role transition.

Questions? Email [VUMCNurseResident@vumc.org](mailto:VUMCNurseResident@vumc.org)

For More Info: <https://www.vumc.org/nurse-residency-program>