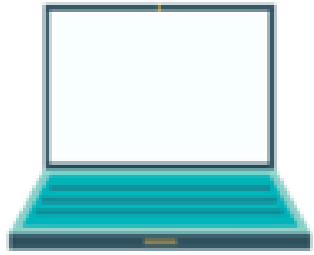


Devices



WHAT is it?

All VUMC IT workstations will be **centrally managed** in VUMC's new environment to **strengthen device management methodology & processes** with tools leveraging Microsoft Services.

WHY are we doing it?

- Modernizes all workstations to **support technology** in new environment:
 - **Life-cycles administrative workstations** (AWS) to new technology
 - Life-cycles Windows 7 machines to Windows 10
 - **Migrates all clinical workstations** (CWS) to new technology
- Builds **new kiosks** in new environment
- Completes **migration of corporate-owned devices** to new technology

Devices Details

Expectations	Timeline	Who will be impacted?	Resources
<ul style="list-style-type: none"> • Deploy net-new and replacement AWS devices. • CWS devices are being joined to the new environment as hardware is being replaced. • As Windows 7 devices are upgraded to Windows 10, they will be configured in the new environment. • Corporate-owned devices will be migrated to the new environment. • Bring Your Own Device (BYOD) is complete. 	<ul style="list-style-type: none"> • New & current employees are receiving devices managed in the new environment. • VUMC IT is evaluating a 5-year hardware life-cycling of AWS devices and as hardware is replaced, the device will be Intune-managed and Azure AD-joined. • Separately, clinical workstations will be replaced and managed in the new environment as equipment is life-cycled. • Migrate all corporate-owned devices to new technology by June 30, 2022. 	<ul style="list-style-type: none"> • All workstations will ultimately be upgraded to new technology <ul style="list-style-type: none"> • Minimal impact to workstations as changes being made are "behind the scenes" technology changes. • Those who use dedicated corporate devices will be contacted as devices are identified and migrated. 	<ul style="list-style-type: none"> • Devices Website • FAQs • Program Navigator • Schedule an appointment to replace your Windows 7 device • BYOD Website

Next Steps: Watch for informational emails that will include the rollout schedule, communication plans, and the steps teams will need to take to support the migration.

Questions?

For more information on ExpeditionTech at www.vumc.org/it/expedition-tech. Still have questions? Share them with by emailing ExpeditionTech@vumc.org