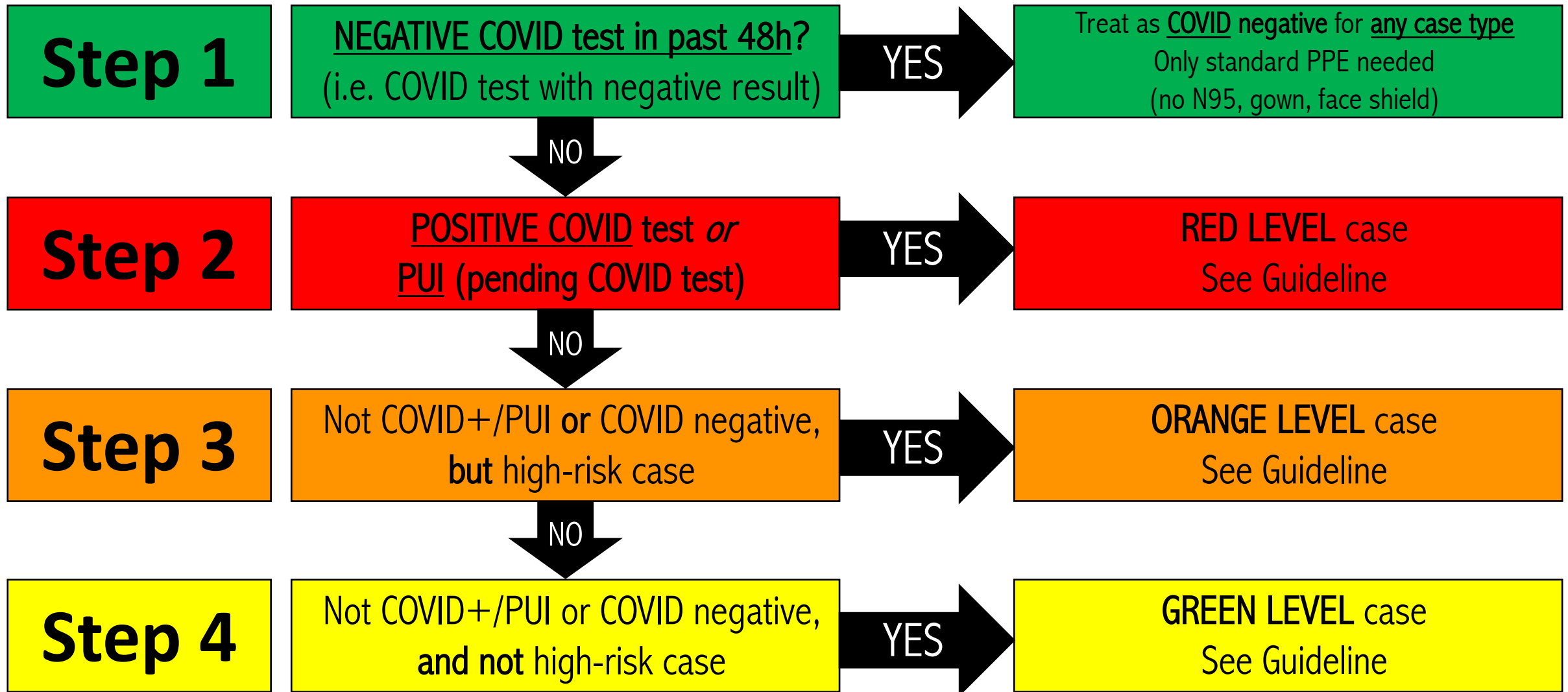


Decision Algorithm for PPE Use in the Operative Setting



Guideline for PPE Use and Team Management in the Operative Setting

Any patient with NEGATIVE COVID test can be treated as COVID negative for any case. Only standard PPE needed (no N95, gown, face shield)

In-Room PPE*

All Team Members for **Entire** Case



After case, another patient is **NOT** brought to OR for ≥30 minutes; OR personnel may clean room using N-95, gowns, gloves and eye protection

All Team Members for **Entire** Case



After case, another patient is **NOT** brought to OR for ≥30 minutes; OR personnel may clean room using N-95, gowns, gloves and eye protection.

Anesthesia Team for Intub/Extub



All other team members should be >6' away or out of room →wear standard PPE for surgical cases

Equipment**



Place blue bell and fluid cart in outside hall **BEFORE** patient enters room; set up OR table in hall for PPE doffing for **COVID airway team**



Remove from OR and place in outside hall **BEFORE** patient enters room

Standard practice
(no change from normal)

Other Personnel



RUNNER:

- Positioned in hall outside OR (not in sterile core)
- Limit room traffic/ minimize door openings
- Obtain needed supplies for anesthesia/surgery teams



RUNNER:

- Positioned in hall outside OR (not in sterile core)
- Limit room traffic/ minimize door openings
- Obtain needed supplies for anesthesia/surgery teams

Any suspected (PUI) or confirmed COVID patients for **any** type of case***

Higher-risk procedures in non-PUI and non-COVID patients

(See case list on [VUMC corona website](#))

All other patients and procedures (i.e. patients with no COVID test results that do not fit a red or orange level category)

* All PPE used in COVID+/PUI cases should be doffed into a biohazard bag after use

** Patient bed (stretcher or ICU bed) will have linens removed and placed in dirty linen receptacle and the bed will then be removed from OR, cleaned by EVS team in hall outside OR, make bed with clean linens, and stored in normal hallway location until end of case.

*** To be intubated by **COVID Airway Team**; please call **615-540-6446** to contact the team

