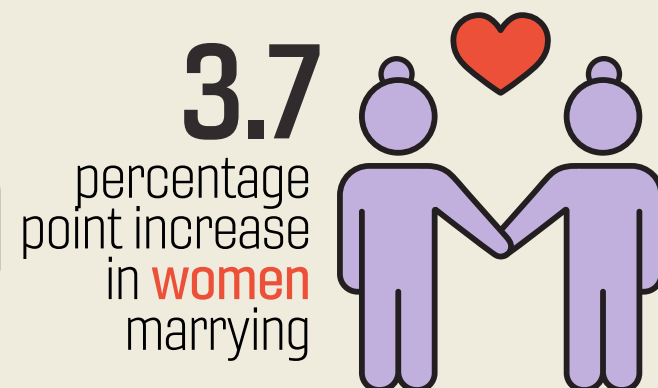
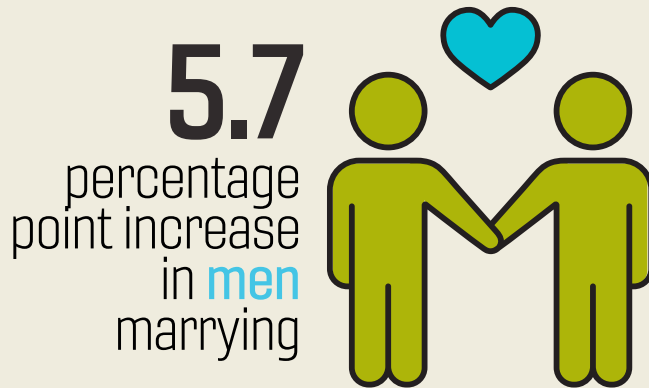




Legal Access to Same-Sex Marriage:

1. Increased marriage take-up among individuals in same-sex households



4.2

pp increase in having health insurance



4.2

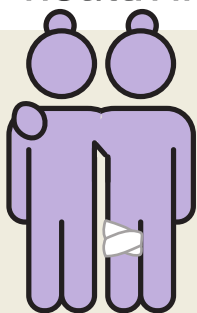
pp increase in having a usual source of care



7.3

pp increase in having a check up

2. Increased health insurance & health care utilization among **men** in same-sex households



3. Did not affect access to health care for **women**



More research on LGBT people and policies is critically needed

