



FACT SHEET

May 17, 2012

**SCIP – Ogumaniha:
Vaccination**

Alfredo E. Vergara PhD¹

Lara M.E. Vaz PhD¹²

Lázaro Gonzales Calvo PhD²

Jeff Weiser MS²

Meridith Blevins MS¹



USAID
FROM THE AMERICAN PEOPLE

This publication was made possible through support provided by the Agency for International Development Mozambique, under the terms of Award No. 656-A-00-09-00141-6 to World Vision Inc. and by Vanderbilt University through the endowment of the Amos Christie Chair in Global Health. The opinions expressed in this publication are those of the author(s) and do not necessarily reflect the views of the U.S. Agency for International Development or World Vision.

¹Vanderbilt University Institute for Global Health. ²Friends in Global Health.

Table 1: Head of household presents an immunization card for child less than five years of age

	No (n=906)	Yes (n=1305)
Household size ^a (n=2211)	5 (4 – 7)	6 (4 – 7)
Children under 5 (n=2211)	2 (2 – 2)	2 (2 – 2)
Age of respondent (n=1837)	27 (23 – 32)	28 (23 – 35)
Marital Status ^b (n=2210)		
Single	14.7% (9.9, 19.6)	13.3% (8.5, 18.2)
Married/Common Law	80.7% (75.4, 86.1)	80.7% (75.4, 86.1)
Widowed	3.2% (0.8, 5.5)	2.9% (0.0, 6.8)
Divorced/Separated	1.4% (0.0, 2.9)	3.0% (1.2, 4.8)
Length of residency (years) (n=2146)	5 (3 – 10)	5 (3 – 11)
Urban/rural (n=2211)		
Rural	89.1% (81.3, 97.0)	78.6% (63.3, 93.9)
Urban	10.9% (3.0, 18.7)	21.4% (6.1, 36.7)
Religion (n=2069)		
Catholic	38.7% (29.1, 48.3)	43.8% (34.0, 53.5)
Protestant	16.6% (10.2, 23.0)	12.4% (7.7, 17.0)
Evangelical and Pentecostal	18.5% (9.9, 27.2)	21.3% (13.9, 28.6)
Other Christian ^c	4.2% (0.0, 8.5)	4.1% (1.9, 6.3)
Muslim	7.5% (1.9, 13.2)	6.4% (2.8, 10.1)
Non Christian Eastern	3.4% (0.6, 6.3)	2.6% (0.6, 4.5)
Other ^c	11.0% (5.5, 16.4)	9.5% (3.1, 15.9)
Education (n=2211)	0 (0 – 3)	2 (0 – 4)
Primary language of household (n=2208)		
Cinyanja	22.1% (8.0, 36.1)	19.7% (6.9, 32.5)
Cisena	15.8% (6.8, 24.8)	9.4% (2.5, 16.3)
Echuabo	24.1% (10.1, 38.2)	18.7% (9.8, 27.5)
Elomwe	33.6% (21.4, 45.8)	42.8% (29.6, 56.1)
Emakhuwa	0.0% (0.0, 0.0)	0.3% (0.0, 0.9)
Portuguese	4.4% (0.1, 8.7)	9.1% (3.1, 15.1)
Respondent understands Portuguese (n=2210)	29.2% (20.3, 38.1)	42.9% (33.9, 52.0)
Distance of EA from health facility (km) ^a (n=2197)	8.9 (4.3 – 12)	6.2 (3 – 9.4)
Monthly household income ^b (n=2009)		
No income	33.2% (23.2, 43.2)	24.6% (18.6, 30.6)
Up to Mts 200	21.5% (15.4, 27.6)	20.9% (15.3, 26.6)
Mts 200–400	12.5% (6.0, 19.0)	16.5% (11.0, 22.1)
Mts 400–600	8.2% (4.6, 11.9)	10.0% (6.3, 13.8)
Mts 600–800	6.0% (2.5, 9.6)	5.5% (2.8, 8.1)
Mts 800–1000	7.4% (3.9, 10.8)	5.3% (2.2, 8.5)
Mts 1000–1500	3.1% (1.1, 5.2)	8.0% (2.6, 13.5)
Mts 1500–4000	7.3% (3.2, 11.4)	7.5% (3.9, 11.1)
More than Mts 4000	0.7% (0.1, 1.3)	1.6% (0.0, 3.5)
Household member has a farm (n=2181)	95.8% (93.1, 98.4)	88.9% (82.4, 95.4)
Sometimes sell crops (n=1955)	62.8% (54.4, 71.2)	61.8% (53.4, 70.2)
Ever sold livestock (n=2209)	22.0% (16.7, 27.3)	21.4% (16.7, 26.1)
Household member owns bicycle (n=2200)	39.5% (31.3, 47.7)	48.4% (42.6, 54.3)
Owens chicken(s) (n=2211)	49.7% (41.9, 57.6)	47.9% (38.7, 57.1)
Household uses latrine (n=2173)	27.7% (20.2, 35.2)	39.1% (28.2, 49.9)
Empowerment (score) (n=2153)	50 (33.3 – 50)	50 (33.3 – 58.3)
Gender equality (score) (n=2207)	77.8 (63 – 93.3)	77.8 (63.3 – 93.3)
Respondent knows overall purpose of child vaccinations ^b (n=2193)		
No	19.3% (13.8, 24.9)	10.9% (7.0, 14.8)
Yes	80.7% (75.1, 86.2)	89.1% (85.2, 93.0)

^a Continuous variables are reported as weighted estimates of median (interquartile range), with each observation being weighted by the inverse of the child sampling probability.

^b Categorical variables are reported as weighted percentages, with each observation being weighted by the inverse of the child sampling probability. The 95% confidence intervals include precision estimates that incorporate the effects of stratification and clustering.

^c ‘Other Christian’ includes LDS Mormon and Jehovah’s Witness. ‘Other’ includes Spiritual, Traditional Religions, and Agnostic or Atheist.

Table 2: Fully vaccinated children under 5 with immunization cards

	No (n=593)	Yes (n=712)
Household size ^a (n=1305)	5 (4 – 7)	6 (4 – 7)
Children under 5 (n=1305)	2 (1 – 2)	2 (2 – 2)
Age of respondent (n=1132)	27 (23 – 33.6)	28 (23 – 35)
Marital Status ^b (n=1304)		
Single	10.7% (5.7, 15.6)	14.9% (8.9, 20.9)
Married/Common Law	83.4% (75.5, 91.2)	79.1% (73.4, 84.8)
Widowed	4.1% (0.0, 9.7)	2.3% (0.0, 5.3)
Divorced/Separated	1.9% (0.2, 3.6)	3.7% (1.3, 6.0)
Length of residency (years) (n=1282)	5 (3 – 12.3)	5 (3 – 10)
Urban/rural (n=1305)		
Rural	82.9% (71.2, 94.7)	76.1% (57.9, 94.2)
Urban	17.1% (5.3, 28.8)	23.9% (5.8, 42.1)
Religion (n=1238)		
Catholic	43.5% (32.0, 54.9)	43.9% (32.0, 55.9)
Protestant	14.9% (7.8, 21.9)	11.0% (4.9, 17.1)
Evangelical and Pentecostal	18.3% (10.5, 26.0)	22.9% (14.0, 31.9)
Other Christian ^c	1.8% (0.2, 3.5)	5.3% (2.5, 8.1)
Muslim	6.8% (2.8, 10.8)	6.2% (2.3, 10.2)
Non Christian Eastern	4.0% (0.0, 8.1)	1.8% (0.2, 3.5)
Other ^c	10.8% (3.4, 18.3)	8.8% (1.7, 15.9)
Education (n=1305)	1 (0 – 4)	2 (0 – 5)
Primary language of household (n=1304)		
Cinyanja	14.8% (4.9, 24.6)	22.6% (7.5, 37.7)
Cisena	19.7% (5.0, 34.4)	3.4% (0.5, 6.2)
Echuabo	20.1% (9.5, 30.7)	17.8% (8.2, 27.5)
Elomwe	38.7% (25.6, 51.8)	45.2% (28.9, 61.5)
Emakhuwa	0.0% (0.0, 0.1)	0.5% (0.0, 1.4)
Portuguese	6.7% (1.3, 12.1)	10.5% (3.0, 17.9)
Respondent understands Portuguese (n=1304)	40.7% (30.9, 50.5)	44.3% (33.7, 54.9)
Distance of EA from health facility (km) ^a (n=1293)	7.2 (3.3 – 10.3)	5.8 (3 – 9.1)
Monthly household income ^b (n=1204)		
No income	29.8% (19.8, 39.7)	21.6% (14.9, 28.2)
Up to Mts 200	27.6% (17.2, 38.0)	17.0% (12.3, 21.6)
Mts 200–400	13.8% (6.6, 21.0)	18.1% (11.1, 25.2)
Mts 400–600	7.2% (2.3, 12.1)	11.7% (6.5, 17.0)
Mts 600–800	3.9% (0.3, 7.6)	6.4% (2.7, 10.1)
Mts 800–1000	4.6% (1.3, 7.9)	5.7% (1.2, 10.3)
Mts 1000–1500	5.7% (0.0, 11.7)	9.5% (3.4, 15.5)
Mts 1500–4000	7.0% (2.4, 11.6)	7.8% (2.9, 12.7)
More than Mts 4000	0.5% (0.0, 1.0)	2.2% (0.0, 5.2)
Household member has a farm (n=1287)	89.4% (81.5, 97.3)	88.6% (81.9, 95.3)
Sometimes sell crops (n=1163)	59.8% (47.0, 72.5)	63.0% (54.0, 72.1)
Ever sold livestock (n=1303)	25.4% (17.4, 33.3)	19.0% (13.7, 24.3)
Household member owns bicycle (n=1300)	48.9% (40.7, 57.1)	48.2% (41.3, 55.0)
Owens chicken(s) (n=1305)	48.3% (38.6, 58.0)	47.7% (36.7, 58.6)
Household uses latrine (n=1282)	30.8% (21.1, 40.6)	44.0% (30.6, 57.4)
Empowerment (score) (n=1274)	50 (33.3 – 58.3)	50 (33.3 – 58.3)
Gender equality (score) (n=1305)	77.8 (63.3 – 93.3)	77.8 (63.3 – 93.3)
Respondent knows overall purpose of child vaccinations ^b (n=1295)		
No	8.9% (4.3, 13.4)	12.1% (6.9, 17.3)
Yes	91.1% (86.6, 95.7)	87.9% (82.7, 93.1)

^a Continuous variables are reported as weighted estimates of median (interquartile range), with each observation being weighted by the inverse of the child sampling probability.

^b Categorical variables are reported as weighted percentages, with each observation being weighted by the inverse of the child sampling probability. The 95% confidence intervals include precision estimates that incorporate the effects of stratification and clustering.

^c ‘Other Christian’ includes LDS Mormon and Jehovah’s Witness. ‘Other’ includes Spiritual, Traditional Religions, and Agnostic or Atheist.

Table 3: Fully vaccinated children under 5 (including self report)

	No (n=1256)	Yes (n=957)
Household size ^a (n=2213)	5 (4 – 7)	6 (4 – 7)
Children under 5 (n=2213)	2 (2 – 2)	2 (1 – 2)
Age of respondent (n=1839)	27 (22.1 – 32)	27.6 (23 – 35)
Marital Status ^b (n=2212)		
Single	12.6% (8.1, 17.1)	15.0% (9.9, 20.2)
Married/Common Law	82.7% (76.9, 88.5)	78.8% (74.0, 83.6)
Widowed	2.8% (0.0, 5.9)	3.2% (0.0, 6.7)
Divorced/Separated	1.9% (0.4, 3.4)	2.9% (1.1, 4.7)
Length of residency (years) (n=2148)	5 (3 – 11.6)	5 (3 – 10)
Urban/rural (n=2213)		
Rural	88.7% (80.9, 96.4)	76.8% (59.5, 94.2)
Urban	11.3% (3.6, 19.1)	23.2% (5.8, 40.5)
Religion (n=2071)		
Catholic	42.4% (34.1, 50.8)	41.5% (30.5, 52.6)
Protestant	16.9% (10.5, 23.3)	11.3% (6.1, 16.5)
Evangelical and Pentecostal	16.5% (10.2, 22.8)	23.6% (14.7, 32.4)
Other Christian ^c	2.1% (0.7, 3.6)	5.8% (1.8, 9.8)
Muslim	8.2% (3.3, 13.1)	5.7% (2.4, 8.9)
Non Christian Eastern	3.6% (0.4, 6.9)	2.2% (0.7, 3.8)
Other ^c	10.2% (5.4, 15.0)	9.9% (2.3, 17.5)
Education (n=2213)	0 (0 – 3)	2 (0 – 5)
Primary language of household (n=2210)		
Cinyanja	15.6% (6.2, 25.0)	25.0% (11.0, 39.0)
Cisena	20.7% (8.3, 33.1)	3.7% (1.2, 6.3)
Echuabo	24.2% (12.0, 36.4)	17.4% (8.6, 26.3)
Elomwe	35.7% (24.2, 47.2)	42.8% (28.2, 57.5)
Emakhuwa	0.0% (0.0, 0.0)	0.4% (0.0, 1.1)
Portuguese	3.7% (0.9, 6.6)	10.6% (2.7, 18.5)
Respondent understands Portuguese (n=2212)	32.4% (24.6, 40.3)	42.9% (33.0, 52.9)
Distance of EA from health facility (km) ^a (n=2199)	7.7 (4.6 – 11.6)	6 (3 – 9.3)
Monthly household income ^b (n=2011)		
No income	33.7% (24.4, 43.1)	22.3% (15.8, 28.8)
Up to Mts 200	26.4% (19.0, 33.9)	16.6% (12.3, 20.9)
Mts 200–400	13.8% (8.7, 18.8)	16.2% (10.2, 22.3)
Mts 400–600	7.7% (4.3, 11.1)	10.9% (6.8, 15.0)
Mts 600–800	4.0% (1.3, 6.7)	7.2% (3.4, 10.9)
Mts 800–1000	4.5% (1.9, 7.0)	7.4% (3.6, 11.3)
Mts 1000–1500	3.4% (0.1, 6.8)	8.8% (3.5, 14.2)
Mts 1500–4000	5.9% (2.8, 9.0)	8.8% (4.0, 13.5)
More than Mts 4000	0.6% (0.1, 1.2)	1.8% (0.0, 4.1)
Household member has a farm (n=2183)	93.3% (89.0, 97.6)	89.6% (84.1, 95.1)
Sometimes sell crops (n=1957)	61.9% (54.0, 69.8)	62.5% (52.7, 72.4)
Ever sold livestock (n=2211)	23.3% (17.5, 29.1)	20.1% (15.7, 24.5)
Household member owns bicycle (n=2202)	41.9% (34.5, 49.4)	48.1% (41.7, 54.6)
Owens chicken(s) (n=2213)	48.2% (40.1, 56.4)	48.9% (39.3, 58.5)
Household uses latrine (n=2175)	26.2% (19.2, 33.1)	43.0% (31.0, 55.1)
Empowerment (score) (n=2155)	50 (33.3 – 50)	50 (33.3 – 58.3)
Gender equality (score) (n=2209)	77.8 (63 – 93.3)	77.8 (66.7 – 93.3)
Respondent knows overall purpose of child vaccinations ^b (n=2195)		
No	16.8% (11.1, 22.5)	11.3% (7.1, 15.5)
Yes	83.2% (77.5, 88.9)	88.7% (84.5, 92.9)

^a Continuous variables are reported as weighted estimates of median (interquartile range), with each observation being weighted by the inverse of the child sampling probability.

^b Categorical variables are reported as weighted percentages, with each observation being weighted by the inverse of the child sampling probability. The 95% confidence intervals include precision estimates that incorporate the effects of stratification and clustering.

^c ‘Other Christian’ includes LDS Mormon and Jehovah’s Witness. ‘Other’ includes Spiritual, Traditional Religions, and Agnostic or Atheist.

Table 4: Vaccination coverage among 1 month olds (BCG & polio)

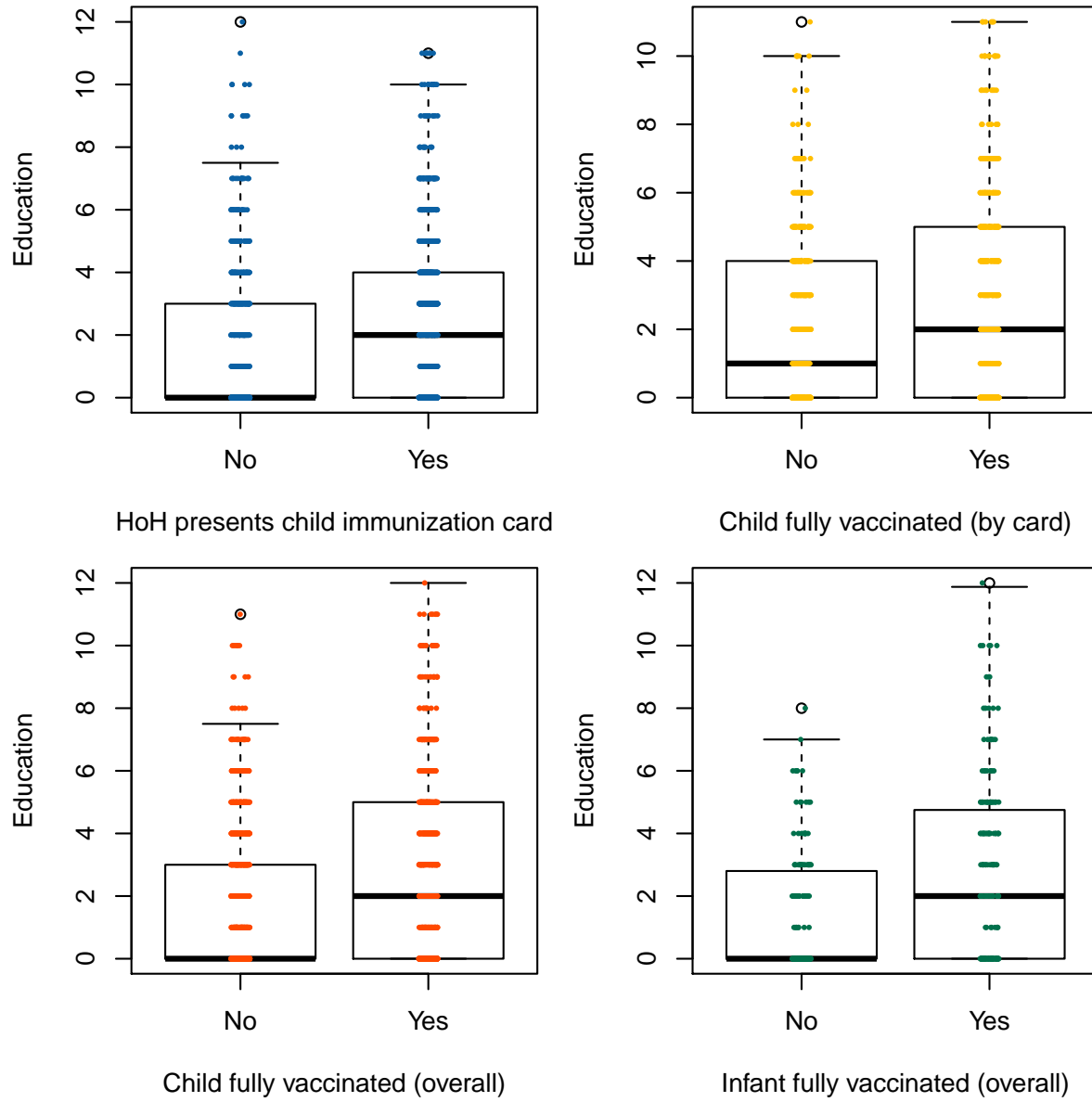
	No (n=163)	Yes (n=192)
Household size ^a (n=355)	5 (4 – 7)	6 (4 – 8)
Children under 5 (n=355)	2 (1 – 2)	2 (1 – 2)
Age of respondent (n=292)	26.9 (20 – 32)	28 (23.4 – 34)
Marital Status ^b (n=354)		
Single	21.8% (6.6, 37.0)	13.5% (7.0, 20.0)
Married/Common Law	77.7% (62.6, 92.9)	80.3% (71.9, 88.6)
Widowed	0.4% (0.0, 1.1)	1.5% (0.0, 4.0)
Divorced/Separated	0.1% (0.0, 0.2)	4.7% (0.1, 9.3)
Length of residency (years) (n=336)	5 (2.8 – 9.5)	4 (3 – 7)
Urban/rural (n=355)		
Rural	89.4% (80.0, 98.8)	78.5% (62.0, 95.0)
Urban	10.6% (1.2, 20.0)	21.5% (5.0, 38.0)
Religion (n=341)		
Catholic	52.4% (39.0, 65.8)	46.2% (27.1, 65.4)
Protestant	17.6% (7.1, 28.1)	10.5% (0.0, 25.7)
Evangelical and Pentecostal	11.1% (2.8, 19.4)	22.2% (9.1, 35.3)
Other Christian ^c	1.0% (0.1, 1.9)	9.2% (0.0, 19.6)
Muslim	12.0% (2.5, 21.5)	3.7% (0.1, 7.3)
Non Christian Eastern	1.1% (0.2, 2.1)	0.9% (0.0, 2.4)
Other ^c	4.8% (1.0, 8.6)	7.3% (0.0, 14.7)
Education (n=355)	0 (0 – 2.8)	2 (0 – 4.7)
Primary language of household (n=354)		
Cinyanja	28.8% (10.5, 47.0)	18.3% (0.0, 37.7)
Cisena	10.6% (4.3, 16.9)	5.5% (0.0, 11.2)
Echuabo	30.2% (10.4, 50.1)	18.1% (7.4, 28.8)
Elomwe	27.6% (13.7, 41.5)	48.0% (27.5, 68.4)
Emakhuwa	0.0% (0.0, 0.0)	0.0% (0.0, 0.0)
Portuguese	2.8% (0.0, 7.6)	10.0% (0.0, 21.1)
Respondent understands Portuguese (n=355)	20.5% (9.6, 31.4)	44.5% (28.2, 60.8)
Distance of EA from health facility (km) ^a (n=352)	8.9 (6.2 – 13.3)	7.2 (3 – 9)
Monthly household income ^b (n=313)		
No income	32.9% (18.3, 47.5)	26.4% (17.2, 35.5)
Up to Mts 200	17.6% (7.4, 27.9)	15.7% (7.5, 23.9)
Mts 200–400	18.0% (8.5, 27.5)	14.2% (5.1, 23.2)
Mts 400–600	2.7% (0.0, 6.2)	12.2% (2.4, 22.1)
Mts 600–800	7.9% (1.1, 14.8)	9.7% (2.0, 17.3)
Mts 800–1000	8.1% (0.0, 17.6)	8.7% (0.0, 18.6)
Mts 1000–1500	4.9% (0.0, 11.1)	3.4% (0.3, 6.5)
Mts 1500–4000	7.1% (0.0, 14.6)	9.1% (0.0, 20.7)
More than Mts 4000	0.7% (0.0, 1.8)	0.7% (0.0, 2.1)
Household member has a farm (n=350)	95.9% (91.4, 100.0)	92.4% (85.9, 99.0)
Sometimes sell crops (n=304)	61.3% (46.4, 76.1)	55.4% (42.2, 68.5)
Ever sold livestock (n=355)	17.6% (8.1, 27.2)	17.9% (7.0, 28.8)
Household member owns bicycle (n=355)	50.6% (37.7, 63.4)	41.7% (27.4, 55.9)
Owens chicken(s) (n=355)	35.3% (23.8, 46.7)	51.4% (33.4, 69.5)
Household uses latrine (n=347)	22.6% (8.3, 36.9)	31.0% (16.7, 45.2)
Empowerment (score) (n=345)	41.7 (33.3 – 58.3)	50 (33.3 – 50)
Gender equality (score) (n=354)	73.3 (52.2 – 90.1)	76.2 (66.7 – 91.6)
Respondent knows overall purpose of child vaccinations ^b (n=351)		
No	26.7% (14.2, 39.1)	11.0% (4.7, 17.3)
Yes	73.3% (60.9, 85.8)	89.0% (82.7, 95.3)

^a Continuous variables are reported as weighted estimates of median (interquartile range), with each observation being weighted by the inverse of the child sampling probability.

^b Categorical variables are reported as weighted percentages, with each observation being weighted by the inverse of the child sampling probability. The 95% confidence intervals include precision estimates that incorporate the effects of stratification and clustering.

^c ‘Other Christian’ includes LDS Mormon and Jehovah’s Witness. ‘Other’ includes Spiritual, Traditional Religions, and Agnostic or Atheist.

Figure 1: Boxplots of Education for Key Child Immunization Outcomes



The edges of the box are the first and third quartiles, with the median marked by the center line. Whiskers extend from the box $1.5 \times \text{IQR}$ (interquartile range; length of the box). Data outlying the whiskers are marked with points. Actual values are overlaid to demonstrate the whole distribution.

Figure 2: Barplots of Portuguese Understanding for Key Child Immunization Outcomes

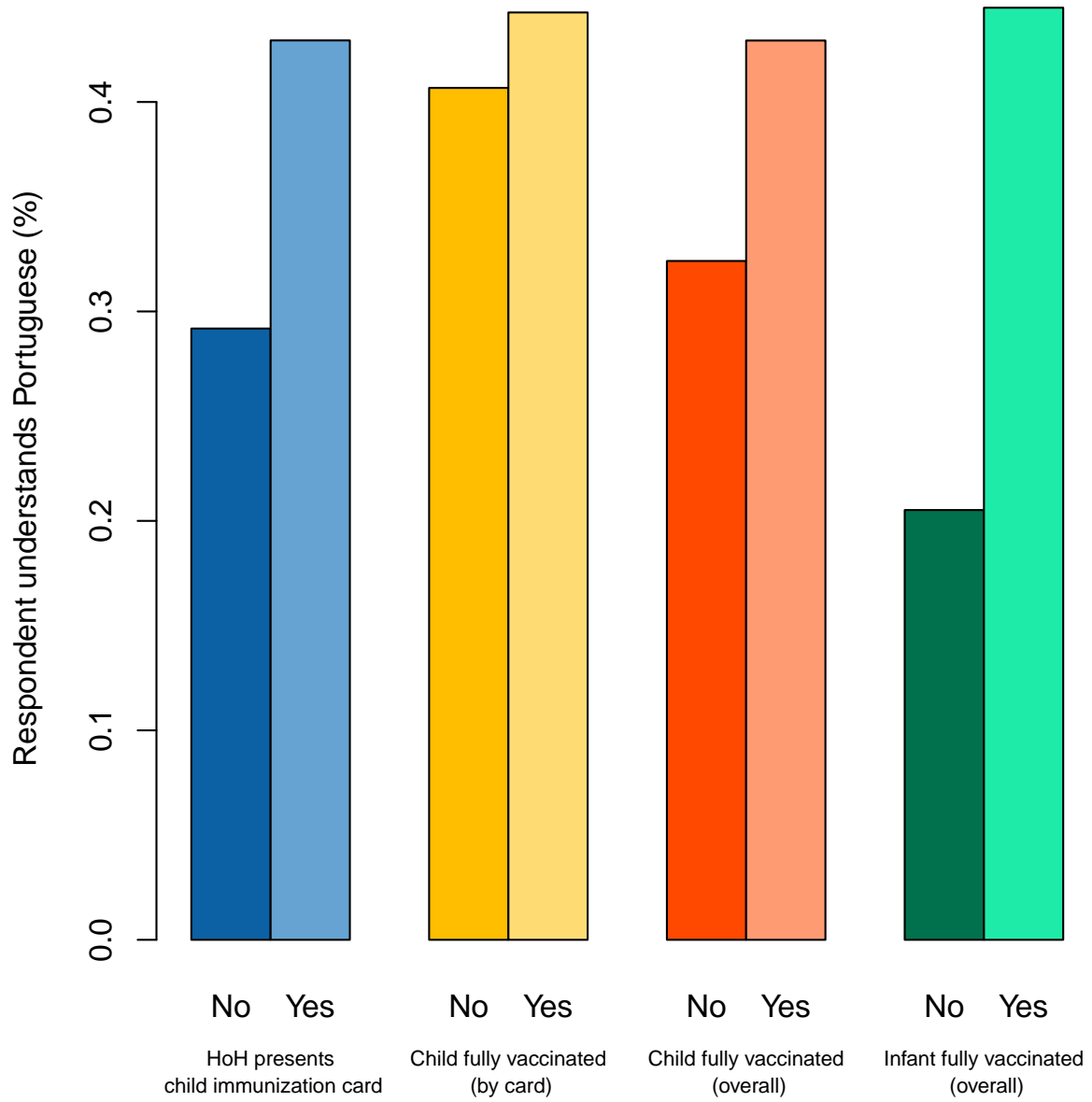
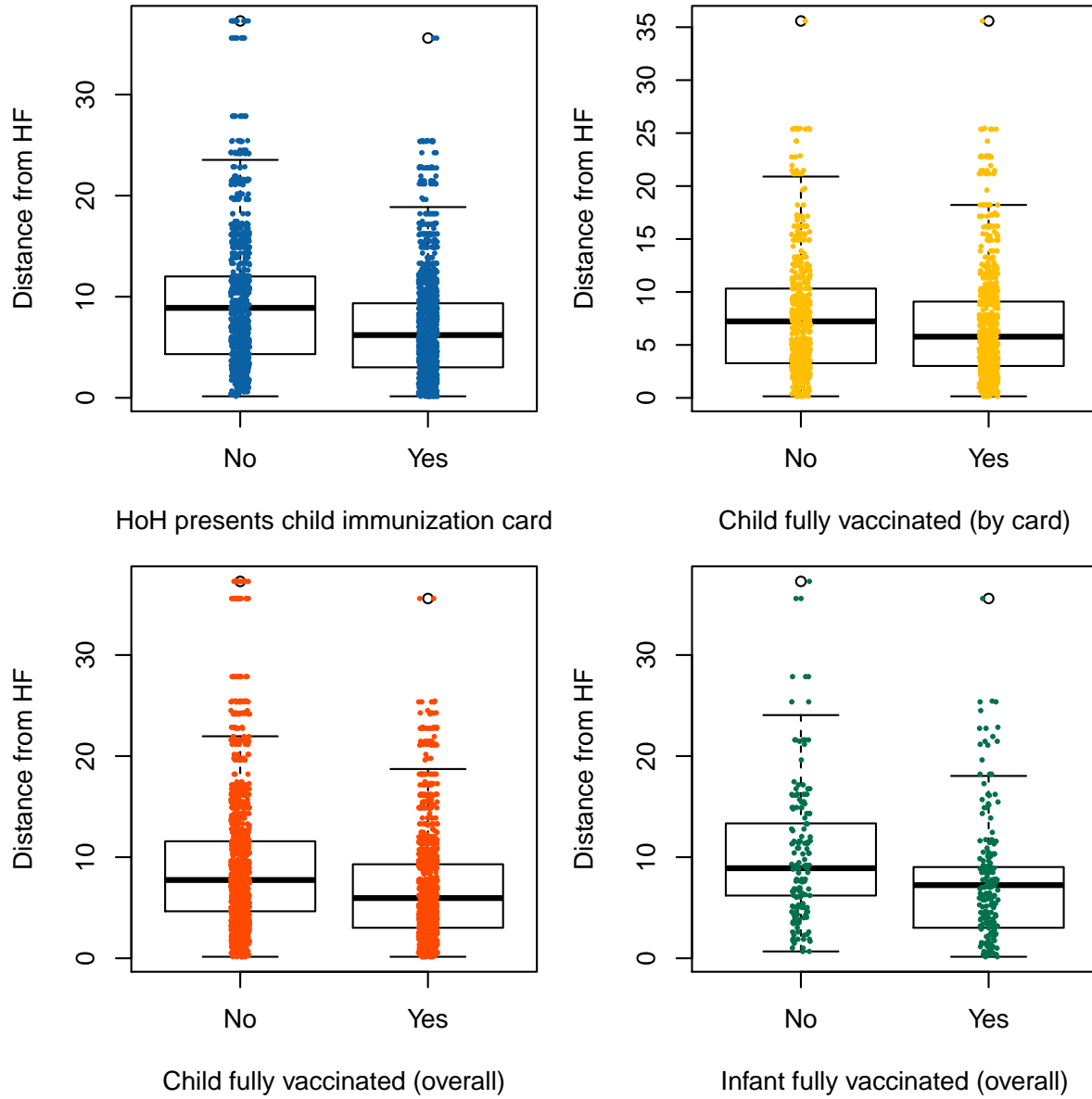


Figure 3: Boxplots for Distance of EA from health facility (km) for Key Child Immunization Outcomes



The edges of the box are the first and third quartiles, with the median marked by the center line. Whiskers extend from the box $1.5 \times \text{IQR}$ (interquartile range; length of the box). Data outlying the whiskers are marked with points. Actual values are overlaid to demonstrate the whole distribution.