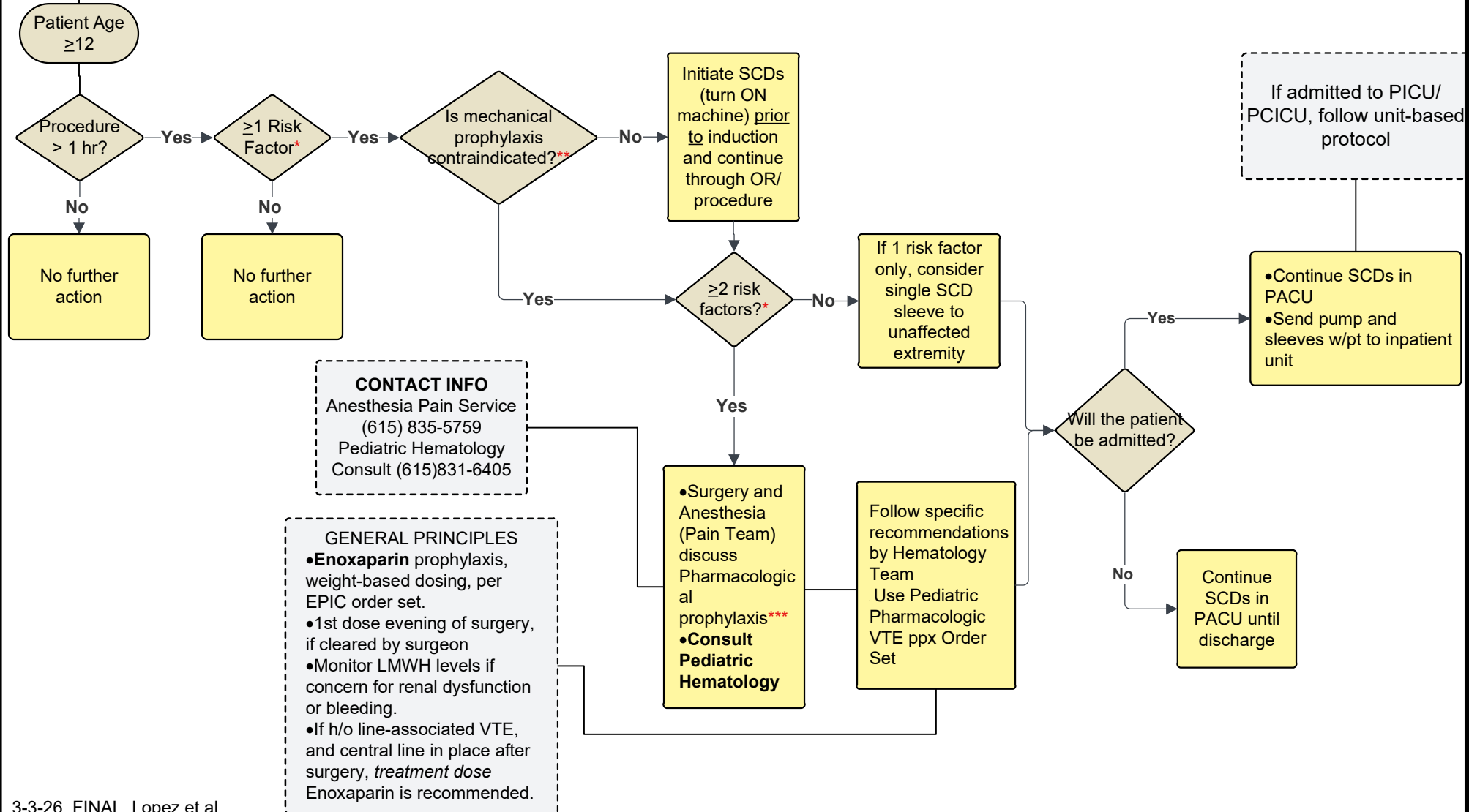


PERIOPERATIVE VENOUS THROMBOEMBOLISM PROPHYLAXIS CLINICAL PRACTICE GUIDELINE



For younger ages with VTE risk factors, consult Pediatric Hematology. **OFF algorithm**



VTE Risk Factors *

- **Altered Mobility > 48 hours**
- **Central Venous Access** (CVL, PICC, Port)
- **Active Cancer**
- **Inflammatory Bowel Disease** (IBD) that is active, uncontrolled or flaring; on steroids, TPN, or mAbs
- **Congenital heart disease** or low flow states
- **Estrogen therapy** started within past 3 months (includes oral contraceptives)
- **Obesity:** BMI >95% for age and gender
- **Personal history of VTE**
- **Family history of VTE** (especially in 1st degree relative)
- **Thrombophilia** (Inherited deficiency of protein S, C or antithrombin, factor V Leiden or prothrombin gene mutation)
- **Post-puberty**
- **Pregnancy** (or within 6 weeks postpartum)
- **Protein Losing Disorders** (Nephrotic Syndrome in relapse, Protein losing enteropathy (PLE), draining chylous effusion etc.)
- **Severe dehydration** – requiring intervention
- Undergoing **abdominal, thoracic or neuro surgery**
- Undergoing **orthopedic surgery** for *lower extremity joint replacement, hip surgery, sarcoma resection, spine surgery/trauma or spinal cord injury*
- Systemic or severe local **infection** (bacteremia, sepsis)
- **Trauma**

Contraindications to Mechanical Prophylaxis**

- Suspected or existing DVT
- Peripheral IV or PICC access in lower leg/foot
- Skin conditions affecting lower leg/foot (i.e. dermatitis, burn)
- Acute fracture of lower leg/foot
- Unable to achieve correct size of SCD
- Lower extremity conditions that result in significant pain with compression (i.e. solid tumor, veno-occlusive episode in sickle cell disease)

The use of a single SCD sleeve applied to a contralateral (unaffected) extremity is encouraged!

Contraindications to Anticoagulation***

Absolute:

- Evidence of active hemorrhage
- Indwelling epidural catheter
- Epidural catheter removal within last 1 hour (discuss with **Hematology and Pain Team**)
- Lumbar puncture performed within last 24 hours
- Perioperative or trauma, if prophylactic anticoagulation not approved by surgeon
- Prior history of unexplained spontaneous hemorrhage
- Neurosurgery, serious head trauma, or large-territory arterial ischemic stroke in the past 7 days, EVD, ICP
- Known intracranial mass, AVM, aneurysm, or moyamoya

Relative:

- Aspirin or other irreversible platelet inhibitor within the last 7 days
- Known bleeding disorder/tendency
- Hypofibrinogenemia
- Thrombocytopenia
- Uncontrolled severe hypertension
- Unexplained PTT prolonged, PT prolonged or INR
- Moderate or severe renal insufficiency, with creatine clearance <60ml/min

Additional contraindications to LMWH use:

- Known allergy/anaphylaxis to LMWH or pork products