

Child Sexual Abuse - Prepubertal

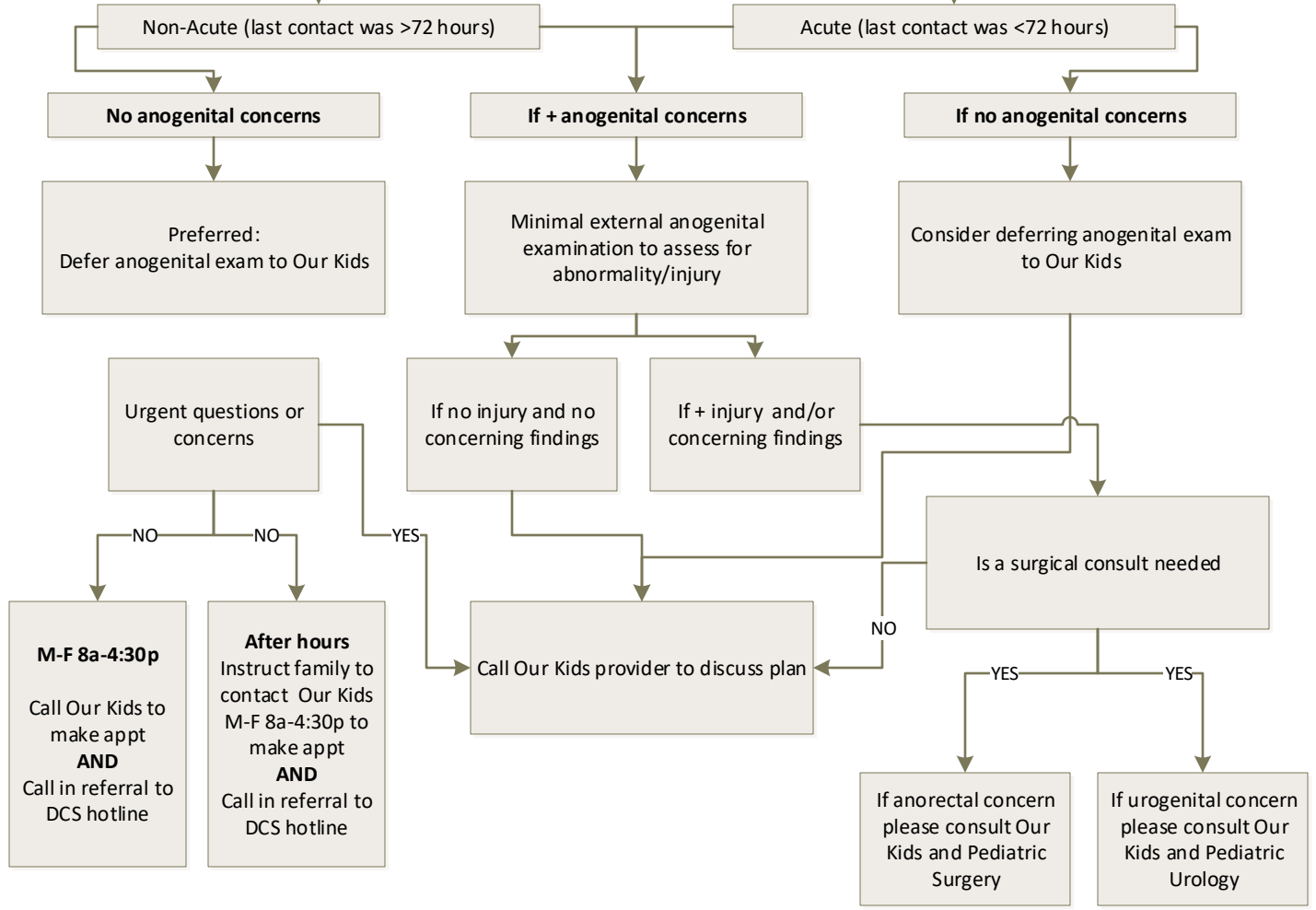
Clinical Practice Guideline



Coordinate with Social Work to obtain history from caregiver **without child present**. Defer gathering history from prepubertal children.

Important information to gather from caregiver only:

- Timing of last contact
- Type of contact (penile-genital, digital-genital, etc.)
- Age/relation of perpetrator
- Anogenital s/sx



This guideline does not take into account individual patient situations, and does not substitute for clinical judgment

Requiring re-assessment or PSH therapy > Q2H and on floor?

Yes

Consider ICU RRT