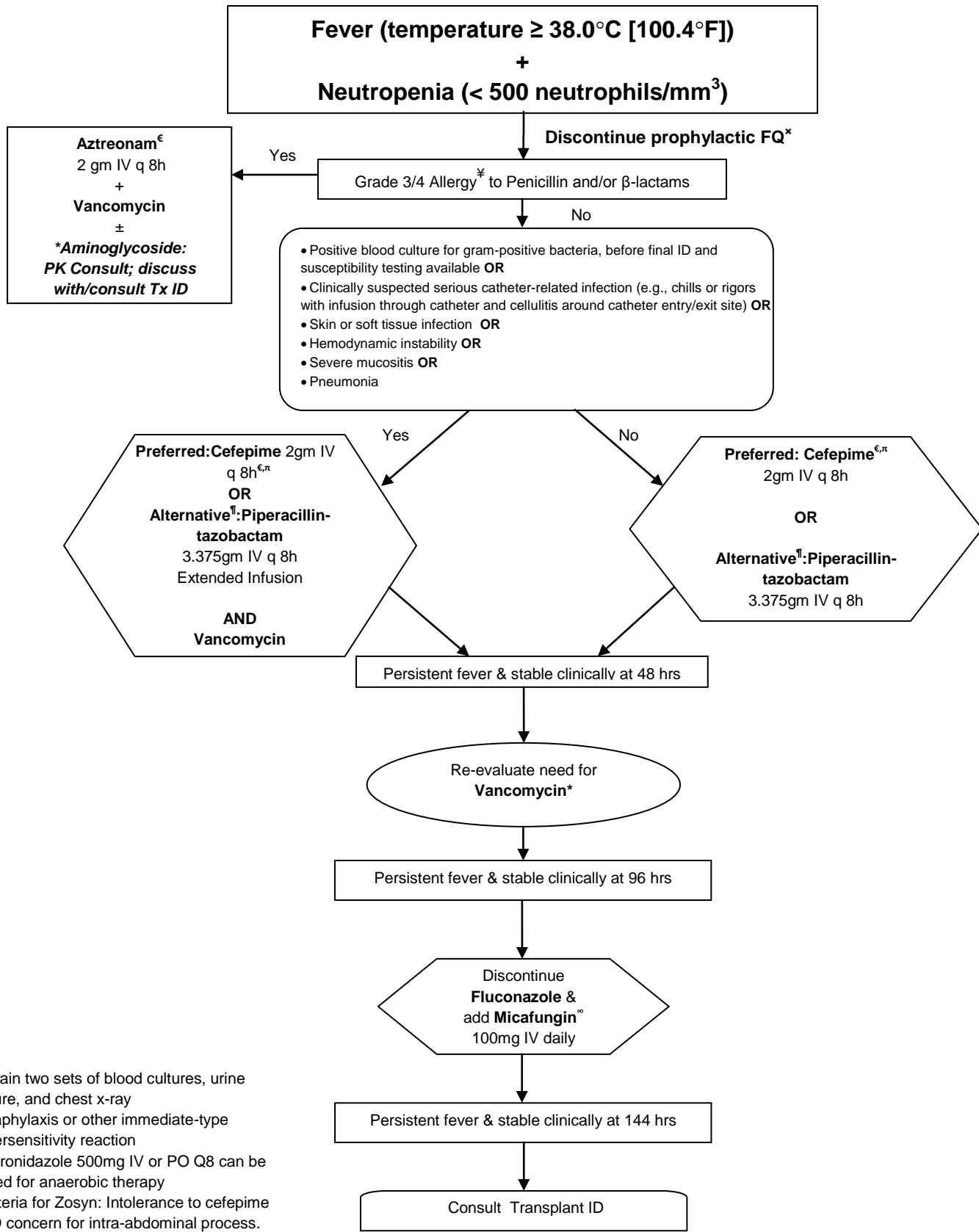


# Empiric Anti-infective Algorithm for Febrile Neutropenia



<sup>x</sup>Obtain two sets of blood cultures, urine culture, and chest x-ray

<sup>‡</sup>Anaphylaxis or other immediate-type hypersensitivity reaction

<sup>€</sup>Metronidazole 500mg IV or PO Q8 can be added for anaerobic therapy

<sup>‡</sup>Criteria for Zosyn: Intolerance to cefepime AND concern for intra-abdominal process. Of note, Zosyn is not considered an escalation from Cefepime

<sup>†</sup>Meropenem: specific indications

\*Discontinue Vancomycin after 72 hours if cultures are negative for MRSA and patient is clinically stable

<sup>™</sup>Consider Voriconazole if neutropenic > 10d

Dosing for normal renal function  
Call pharmacy for dose adjustments